

PUMP SHAFT KPS 1003

- Corrosion-free and buoyancy-proof
- Easy to install
- Suitable for traffic load class D
- DIBt building authority approval Z-42.1-313
- Modular ring construction
- Shaft extendable up to 4.95 m
- Load-decoupled multi-lip seals
- Integrated plastic access ladder
- Universal shaft base
- Collection chamber expandable with intermediate ring
- Pressure outlet height according to customer requirements
- Possible valve installation kits:
 - DN40 stainless steel/GRP
 - DN50 PE100/GRP
 - DN80 V4A/GGG (single-pump unit only)

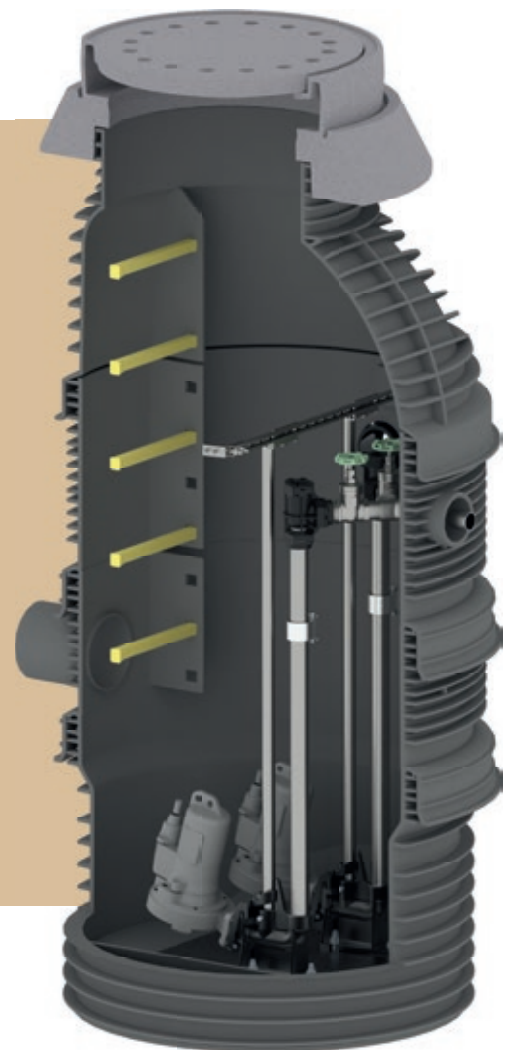


Fig. shows KPS 1003-D40E version.

Corrosion-free and easy-to-install DN1000 wastewater collection chamber for the installation of rainwater and wastewater pumps. The chamber is made of high-quality, solid-wall and ribbed PE components in modular ring construction with multi-lip seals and is approved by the DIBt (Z-42.1-313) in accordance with DIN EN 476, DIN EN 752 and based on DIN 19537 Part 3. Application range SLW 60, suitable for truck traffic up to class D. Buoyancy-proof up to an installation depth of 4.95 m.

The chamber base with collection chamber benching is designed for universal use and can be configured either as an empty chamber or with pump coupling feet from DN40 to DN80. Installation depths of up to 4.95 m can be achieved using extension elements. A plastic access ladder with replaceable yellow GRP rungs is included as standard. An access aid is optionally available.

Thanks to its modular design, the pumping chamber can be adapted to the project requirements in terms of installation depth, inlet and pressure outlet height, and collection chamber depth. The installation depth of the basic chamber, including a commercially available BEGU chamber cover class D, is 2470 mm. The collection chamber volume below the DN200 inlet is approx. 400 litres and can be increased by 200 or 400 litres using an intermediate ring.

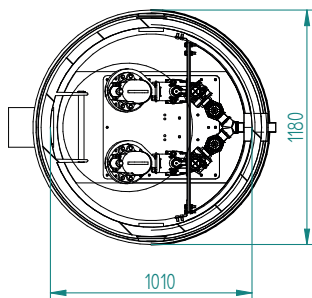
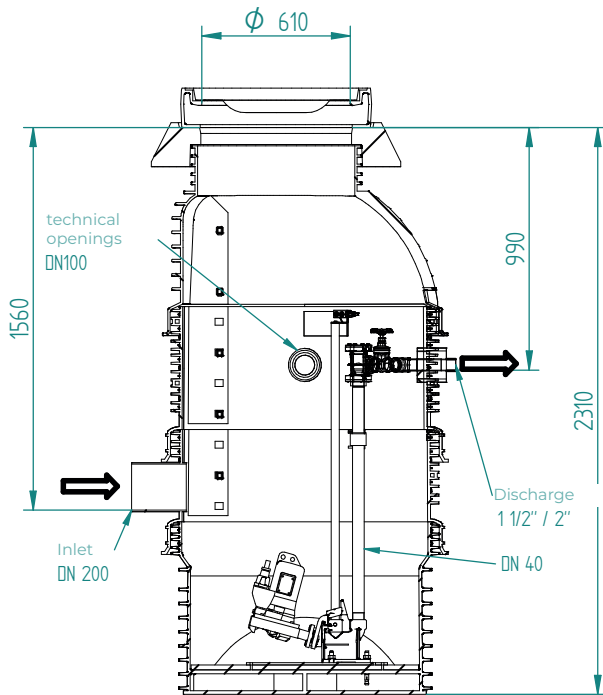
In the version as a pumping chamber for pressuredrainage, the GR35 guide rail system and DN40 valves from Pentair Jung Pumpen are used as standard, either as a single- or duplex-pump unit, and can be equipped with MultiCut grinderpumps. The pipework is made of V4A stainless steel.

In the version as a pumping chamber for rainwater, PP/GRP valves and DN50 PE100 pipework with coupling feet for 2" submersible motor pumps are installed.

PUMP SHAFT KPS 1003

Type: KPS 1003-D40E

Design as a duplex pumping station with two grinder pumps



Tender Text

DN 1000 pump shaft with installed pipework

made of polyethylene in a ring construction for wastewater

Dual pumping system to accommodate two grinder pumps

E Total installation depth, without shaft cover: 2.32 m

Weight of base shaft without concrete components: 210 kg

Application area SLW 60, truck-traffic-rated up to Class D

Approved by DIBt (Z-42.1-313, System: Wavin Tegra 1000 PE),

in accordance with DIN EN 476, DIN EN 752 and based on

DIN 19537 T3. Certified by German Institute IKT,

impervious to external water up to 0.8 bar,

buoyancy-resistant without additional measures

up to a maximum installation depth of 4.95 m.

Consisting of solid-walled PE prefabricated components with a

wall thickness of at least 10 mm and additional external rein-

forcement ribs. Shaft pipe connections with load-decoupled

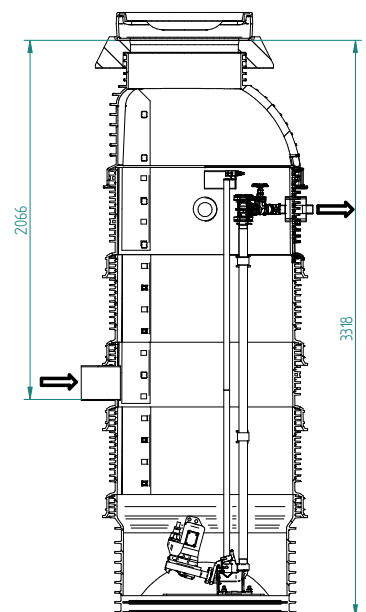
multiple lip seal elements.

- Bottom shaft element with double, smooth ground and side recesses for pump sump
- System shaft pipes and eccentric cone with integrated riser in accordance with BG requirements with yellow corrosion-resistant GRP rungs
- Base shaft system extendable with additional shaft ring elements
- Concrete support ring for secure, non-slip mounting of a standard manhole cover \varnothing 600 mm
- Pipe connections for pump manhole:
 - 1x welded-in inlet connection \varnothing 200 mm
 - 2x service openings DN100 with Forsheda-type plug-in seal
 - 1x welded-in liner pipe for pressure outlet, inserted and sealed with a link chain seal

Installation components, fully assembled on a sturdy stainless steel base plate in the bottom shaft element:

- 2x coupling foot and claw, GR35 sliding pipe system
- 2x piping and fittings 1 1/2" stainless steel 316
- 2x angled ball-type check valve KE 40, GRP with flushing connection option
- 2x socket gate valve DN 40, V4A stainless steel
- Pressure discharge 1 1/2" stainless steel 316
- Universal crossbar, stainless steel, with sliding pipe holders
- 2x sliding pipes, stainless steel, up to max. length 1.5 m

Pressure outlet and access opening are possible when using shaft extensions with a pipe bottom depth of max. 1.5 m from top of ground level.



Example with extension options

Version	Description	Art. No.
KPS 1003	Empty shaft consisting of: <ul style="list-style-type: none"> • Shaft base section with double bottom and pump sump • Shaft ring with access ladder and DN 200 inlet pipe • Shaft ring with access ladder and 2x DN 100 Forsheda openings, 1x socket pipe for discharge outlet • Shaft cone with access ladder • Concrete support ring for cover, 610 mm • Including shaft ring lip seals 	140650
	Pump shafts including installed piping, valves, and guide rail system	
KPS 1003-E40E	Single-pump system DN 40 for one grinder pump	140710
KPS 1003-D40E	Duplex system DN 40 for two grinder pumps	140720
KPS 1003-E50K	Single-pump system DN 50 for one 2" wastewater pump	140730
KPS 1003-D50K	Duplex system DN 50 for two 2" wastewater pumps	140740
KPS 1003-E80E	Single-pump system DN 80 for a wastewater pump	140750
Shaft accessories		
	Second inlet to place in shaft ring 375, DN 150 or DN 200 port	140651
	Shaft ring with access ladder, H 375, with DN 200 inlet port, including gasket	140652
	Shaft ring with access ladder, H 500, including gasket	140653
	Shaft ring with access ladder, H 750, including gasket	140654
	Shaft ring with access ladder, H 1000, including gasket	140655