

AQUATO®

# TECHNICAL CATALOGUE

Innovative, scalable,  
sustainable.

- \_ Sewage treatment plants
- \_ Concrete tanks
- \_ Plastic tanks
- \_ Street cabinets / Wall cabinets
- \_ Pumping stations



# Contact

Feel free to contact us  
for further assistance.

**Personal**, focussed,  
determined.

- \_ Phone +49 (0) 5221 10219 - 0
- \_ Fax +49 (0) 5221 10219 - 20
- \_ Mail [info@aquato.de](mailto:info@aquato.de)
- \_ Web [www.aquato.de](http://www.aquato.de)

• <b>Contact</b> .....	2
• <b>Index</b> .....	3
• <b>About us</b> .....	4
<b>SSB® – STABI-KOM</b>	
Overview .....	8
Compressors and accessories .....	10
Plant example in concrete tank .....	12
Prefabricated plant in plastic tank .....	14
<b>SBR – KOM</b>	
Overview .....	22
Compressors and accessories .....	24
Plant example in concrete tank .....	26
<b>SBR – PUMP</b>	
Overview .....	30
Plant example in concrete tank .....	32
<b>Fixed Bed – 3K-PLUS</b>	
Overview .....	36
Accessories.....	38
Plant example in concrete tank .....	39
<b>MBBR – 3K-FLOW</b>	
Overview .....	42
Accessories.....	44
Plant example in concrete tank .....	45
<b>H-/P-/C-/CL-module</b>	
H-module .....	48
P-/C-/CL-module.....	49
<b>ORKA</b>	
Sewage treatment plant from 51 PE .....	52
References.....	54
• <b>Street cabinets / Wall cabinets</b>	
Overview .....	58
• <b>Pumping stations</b>	
Pressurised drainage .....	62

## ABOUT US

AQUATO® Umwelttechnologien GmbH, based in Herford, Westphalia, is one of Germany's leading manufacturers of wastewater treatment plants and wastewater technology for up to 3,000 inhabitants.

Over 70,000 of our wastewater treatment systems are now in operation worldwide. Ranging from small wastewater treatment plants and decentralized wastewater treatment plants for municipalities to innovative and perfectly coordinated solutions for a wide range of industries with the most diverse requirements.

The development of SSB® process was revolutionary. With the AQUATO® STABI-KOM, what had been attempted for a long time was achieved: a small wastewater treatment plant with almost no sludge removal, approved by the DIBt, with certified outstanding cleaning performance, low odour and corrosion-preventing.

Our systems in small and large scale clean with significant success, stability and sustainability. Our team of employees will be happy to support you with a fast, friendly and customer-oriented service!



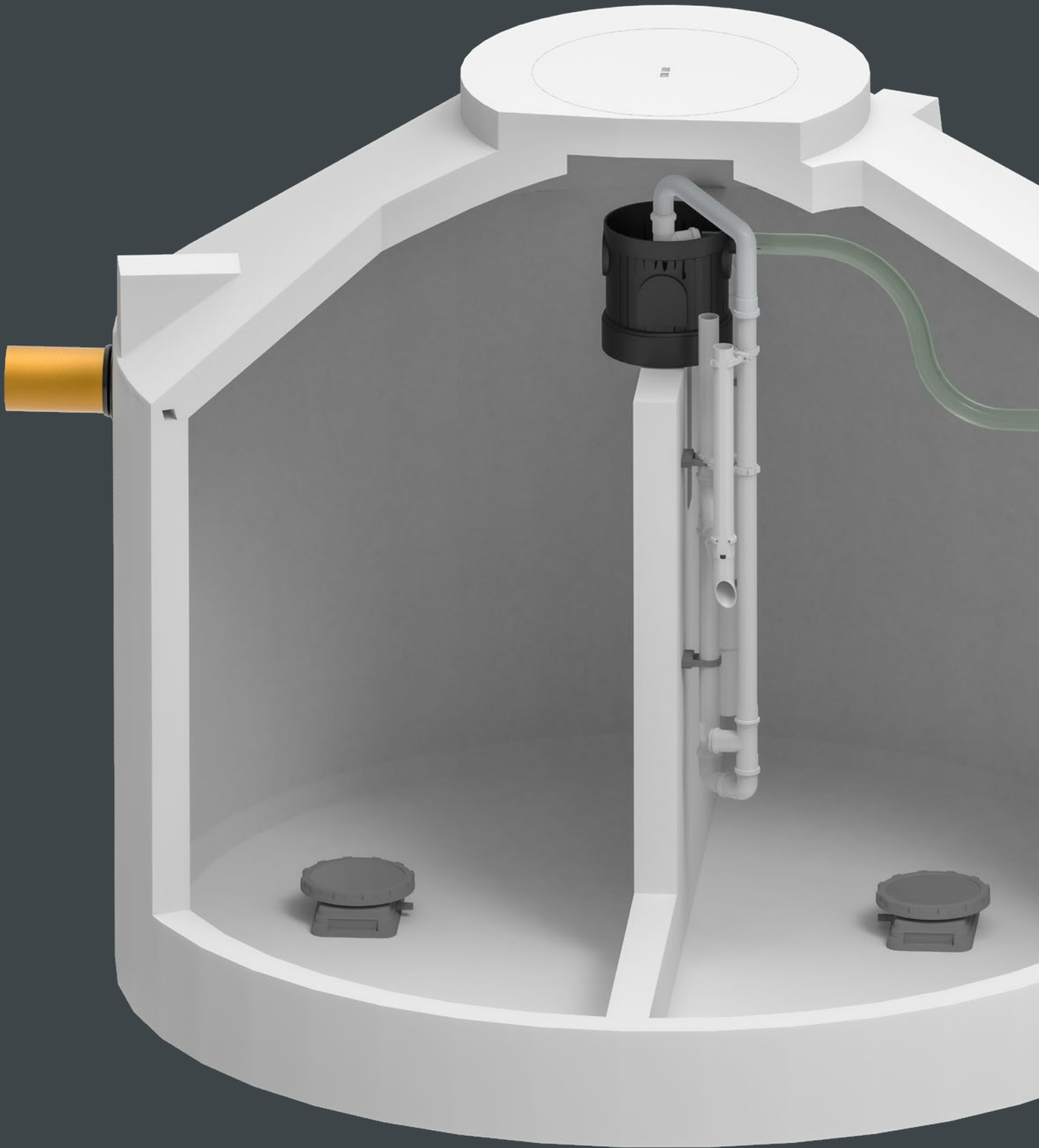


**SSB<sup>®</sup>**

Sewage treatment plants  
STABI-KOM

**Innovative**, efficient,  
economical.

- \_ Retrofittable to all tank geometries
- \_ No odour
- \_ No fouling
- \_ No corrosion in concrete tanks
- \_ Low sludge disposal

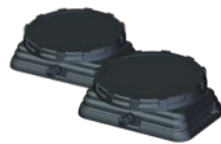


### Advantages at a glance

- Can be retrofitted to all tank geometries
- No odour
- No fouling
- Less costs for sludge removal
- No corrosion in the concrete tanks
- Use of a submersible motor pump possible
- Low maintenance costs due to simple handling
- Inexpensive and economical to operate
- Low wear
- No electrics in the tank
- Underload capable
- Energy efficient



Control K-Pilot 18.1/18.3 with wall console



Disc diffuser

**OUTSTANDING PERFORMANCE!**  
 COD: 95%  
 BOD<sub>5</sub>: 99%  
 TSS: 96%  
 NH<sub>4</sub>-N: 98%  
 N<sub>TOT,ANORG</sub>: 77%



AQUATO® STABI-KOM



AQUATO® STABI-KOM-PAKT  
 Lifting unit on a practical bracket for concrete or plastic tanks

PE	Q <sub>D</sub> [m³/d]	V <sub>tot</sub> [m³]	
		WSS	RSS
4	0,60	3,29	2,64
6	0,90	4,83	3,86
8	1,20	6,37	5,08
10	1,50	7,72	6,10
12	1,80	9,26	7,32
14	2,10	10,80	8,54
16	2,40	12,34	9,76
18	2,70	13,89	10,98
20	3,00	15,43	12,20
22	3,30	16,97	13,42
24	3,60	18,52	14,64
26	3,90	20,06	15,86
28	4,20	21,60	17,08
30	4,50	23,15	18,30
32	4,80	24,69	19,52
34	5,10	26,23	20,74
36	5,40	27,78	21,96
38	5,70	29,32	23,18
40	6,00	30,86	24,40
42	6,30	32,40	25,62
44	6,60	33,95	26,84
46	6,90	35,49	28,06
48	7,20	37,03	29,28
50	7,50	38,58	30,50

Article number	Type	PE	Control	*Compressor	*Number of diffusers	Price [€]
				[l/min]		
116001	STABI-KOM	4-6	K-Pilot 18.1	80	2 / Disc	2.342,00
116002		7-11	K-Pilot 18.1	120	2 / Disc	2.503,00
116003		12-16	K-Pilot 18.1	150	4 / Disc	2.915,00
116004		17-20	K-Pilot 18.1	200	4 / Disc	3.155,00
116120		17-24 ECO	K-Pilot 18.3	200	4 / Disc	3.216,50
116005		21-26	K-Pilot 18.3	2 x 150	4 / Disc	4.293,50
116121		25-28 ECO	K-Pilot 18.3	200	6 / Disc	3.457,50
116012		27-30	K-Pilot 18.3	2 x 150	6 / Disc	4.489,50
116006		31-40	K-Pilot 18.3	2 x 200	6 / Disc	4.738,50
116011		41-50	K-Pilot 18.3	3 x 200	8 / Disc	6.150,00
116014	STABI-KOM-PAKT	4-6	K-Pilot 18.1	80	2 / Disc	2.526,50
116015		7-11	K-Pilot 18.1	120	2 / Disc	2.688,50
116016		12-16	K-Pilot 18.1	150	4 / Disc	3.098,50
116021		17-20	K-Pilot 18.1	200	4 / Disc	3.327,00
116043		21-26	K-Pilot 18.3	2 x 150	4 / Disc	4.466,50
116034		27-30	K-Pilot 18.3	2 x 150	6 / Disc	4.702,50

All article variants include: Lifting unit, control unit, compressor, disc diffuser, installation material and fabric hose  
 For larger requirements, see chapter "ORKA".

PE = Population equivalents  
 WSS = With sludge storage  
 RSS = Reduced sludge storage

\* Standard version



### Control K-Pilot 18.1/18.3

- Compact design thanks to integrated rotary valve with step motor
- Very quiet in operation
- Modern control system for reliable operation
- Graphic display
- Safe and easy handling
- Back pressure monitoring

The K-Pilot 18.3 control unit is required for special applications such as

- Phosphate elimination
- Hygienisation
- Carbon dosing
- Connection of a clear water pump
- Connection of additional compressors

The K-Pilot 18.1 can be used for up to 20 PE.  
The K-Pilot 18.3 can be used for up to 50 PE.



Optional: Wall cabinet 6N (W x H x D: 530 x 580 x 250 mm)  
Art.-No. 102354 (without compressor + control)  
Wall cabinet can be used for up to 20 PE



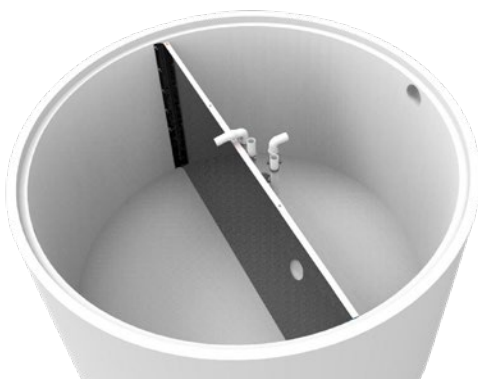
Optional: Street cabinet 6.1T  
(W x H x D: 400 x 1275 x 320 mm)  
Art.-No. 102603  
(without compressor + control)  
Street cabinet can be used for up to 20 PE



Optional: Street cabinet X7 (W x H x D: 422 x 1510 x 316 mm)  
Art.-No. 101932 - Grey  
Art.-No. 101960 - Green  
(without compressor + control)

Street cabinet can be used for up to 20 PE

Further street cabinets / installation variants can be found in the chapter "Cabinets".



### Partition wall

Partition wall for retrofitting in an existing 1-chamber concrete tank

Art.-No.	Article description	Water depth	Price
100917	Partition wall 1-chamber tank	up to 1,70 m	565,00 €
102414	Partition wall 1-chamber tank	up to 2,20 m	582,00 €
102878	Partition wall 1-chamber tank	up to 2,50 m	608,00 €

Please specify the inside diameter of the concrete tank and the water depth when ordering.  
Can be used from Ø 1.50 m to Ø 2.50 m

### Compressor

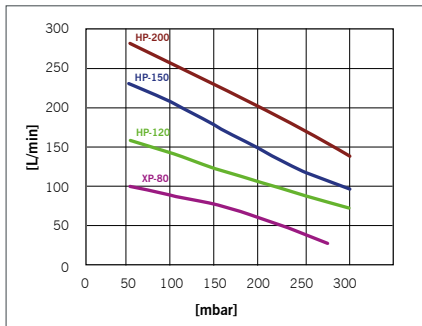
The XP-80 can be used in **water depths of up to 1.8 m.**  
 HP-120 to HP-200 can be used up to a **water depth of 2.1 m.**



Hiblow XP-80



Hiblow HP-200



Compressor replacement	Surcharge
XP-80 to HP-120	185,50 €
XP-80 to HP-150	475,50 €
XP-80 to HP-200	633,50 €
HP-120 to HP-150	290,00 €
HP-120 to HP-200	448,00 €
HP-150 to HP-200	158,00 €

### Sampling pit type 300

- Downstream shaft
- Large diameter for convenient sampling with sampling cup
- Forced flow



Downstream sampling shaft



### Sampler type Mono D 100/150

Art.-No.	Article description	Volume	Price
112096	Sampler type Mono D 100/150 (concrete)	7 liters	88,00 €
103405	Sampler type Mono D 100/150 (plastic)	7 liters	88,00 €

### Sampler with sampling cup



Art.-No. 112051  
 Art.-No. 112054

Art.-No.	Article description	Volume	Price
112051	Sampler with sampling cup (concrete)	1,6 liters	101,50 €
112054	Sampler with sampling cup (plastic)	1,6 liters	101,50 €
100651	Sampler XL	3,6 liters	186,50 €
102611	Sampling pit with cover, walkable - Type 300	21 liters	202,00 €
102615	Extension for shaft - 600 mm / Ø 310 mm	—	65,50 €



Clear water pump, model 1  
Art.-No. 121005

Clear water pump, model 3  
Art.-No. 121004  
(air-lift and partition wall bracket  
not included in the contents of delivery)



Chain hanger for excess sludge lifter  
+ clear water lifter  
Art.-No. 121101  
(for mounting in concrete tanks)  
Art.-No. 121103  
(for mounting in plastic tanks)



Emergency overflow  
Art.-No. 100630 Ø 100  
Art.-No. 100635 Ø 150



Baffle  
Art.-No. 116009



Traverse set for retrofitting  
in 1-chamber concrete tanks  
Art.-No. 103018



Additional disc diffuser  
Art.-No. 102135 with distributor valve  
Art.-No. 102136 with Y-piece



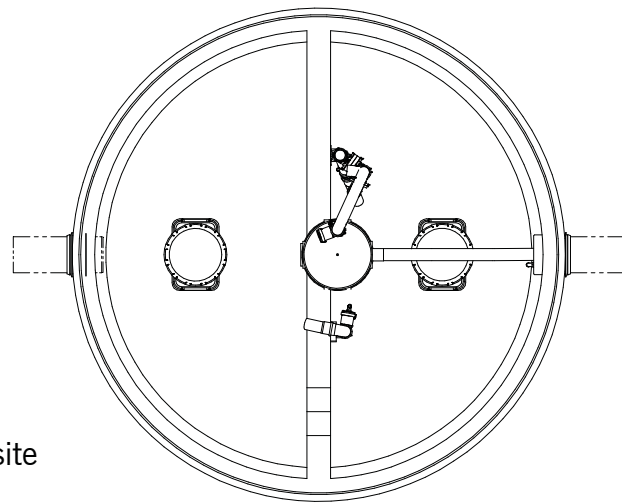
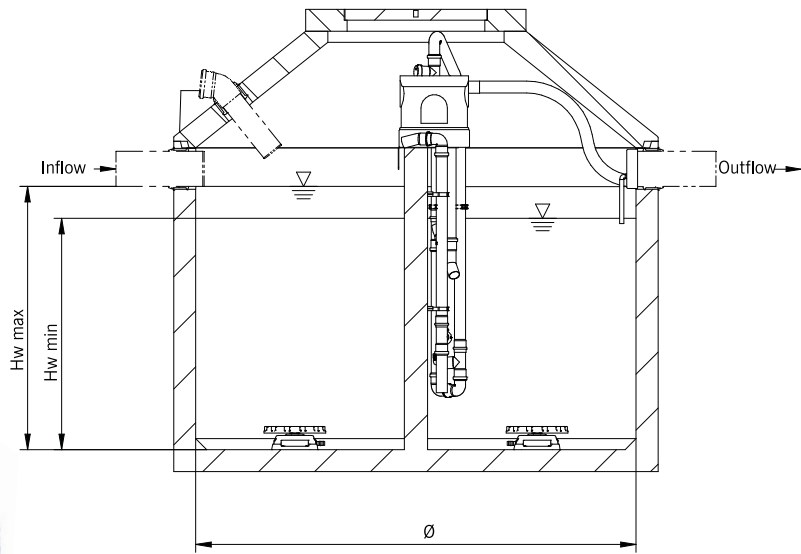
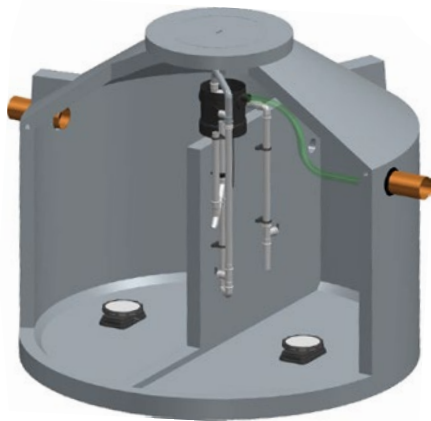
Float switch with clamps  
Art.-No. 100615

Art.-No.	Article description	Note	Price
100615	STABI-KOM float switch with 10 metre cable	1	87,00 €
100630	Emergency overflow Ø 100 mm		42,00 €
100635	Emergency overflow Ø 150 mm		36,00 €
102135	Additional disc diffuser STABI-KOM ready for connection to 16 mm air hose, Ø 235 mm with distributor valve		138,50 €
102136	Additional disc diffuser STABI-KOM ready for connection to 16 mm air hose, Ø 235 mm with Y-piece		125,00 €
116009	Baffle 800 x 600 x 1 mm for STABI-KOM		60,50 €
121004	Clear water pump for STABI-KOM-PAKT model 3, with 10 metre cable	1, 2, 3	590,50 €
121005	Clear water pump for STABI-KOM model 1, with 10 metre cable	1, 2	626,50 €
121101	Chain hanger for lifting unit (for concrete)		267,50 €
121103	Chain hanger for lifting unit (for plastic)		267,50 €
103018	Traverse set for lifter installation, pre-assembled, for concrete tanks Ø 2.00 m to 2.50 m		374,00 €

<sup>1</sup> Other cable lengths on request

<sup>2</sup> With sampling cup

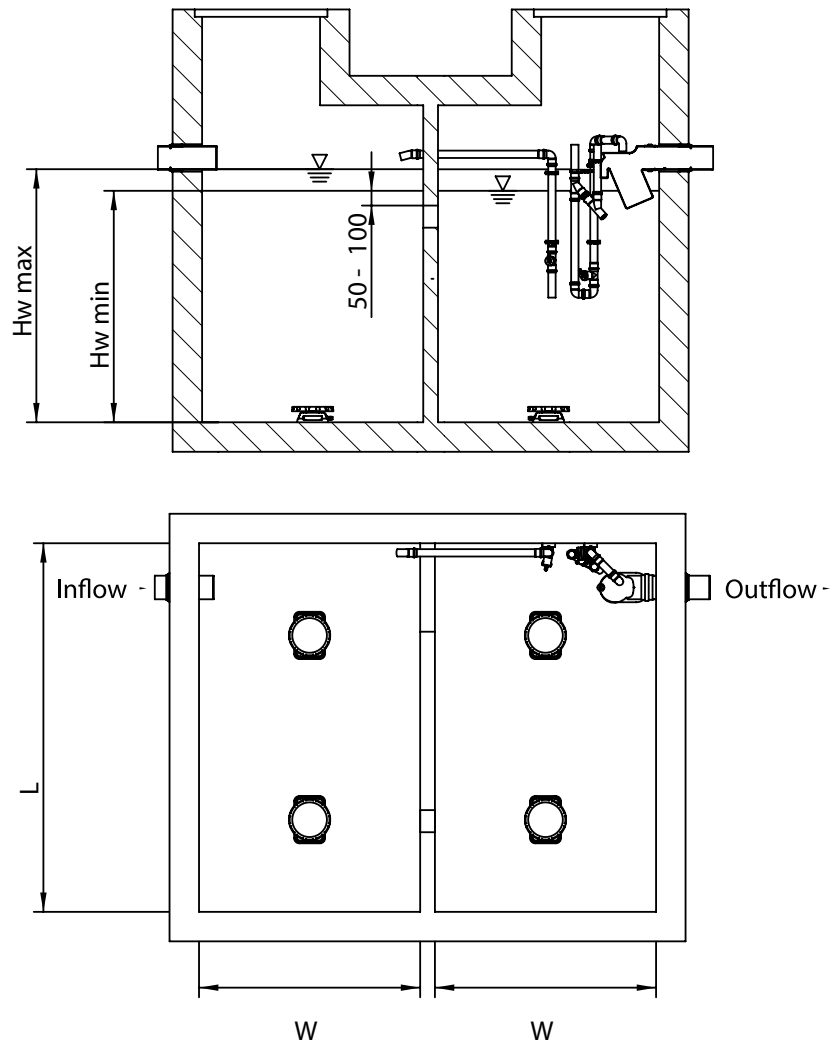
<sup>3</sup> Only for KOM-PAKT / STABI-KOM-PAKT



--- on-site

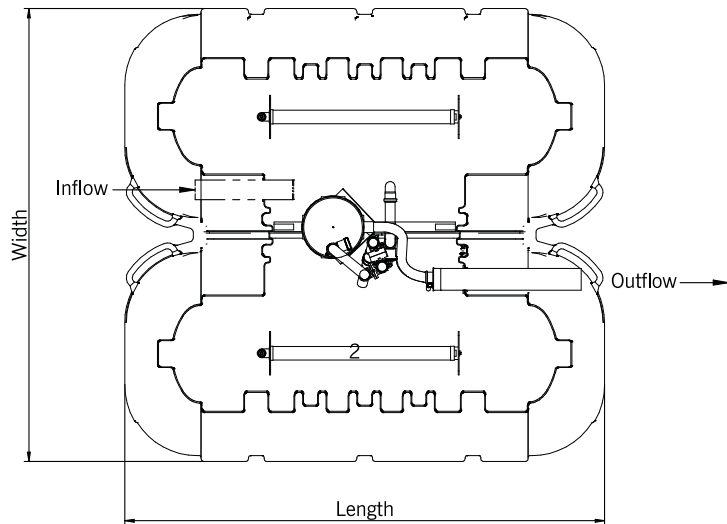
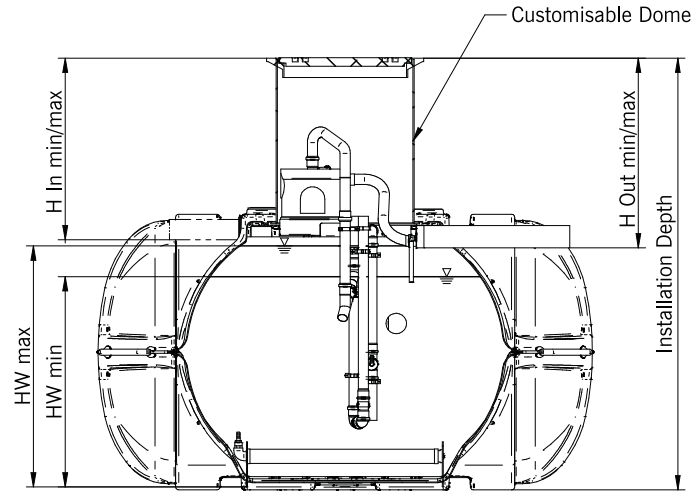
Round tanks

$Q_d$	PE	Volume	$H_{W \max}$	$H_{W \min}$	Number of tanks	$\varnothing$
[m <sup>3</sup> /d]		[m <sup>3</sup> ]	[m]	[m]		[m]
0,60	4	3,59	1,30	1,05	1	2,00
0,90	6	6,14	1,30	1,18	1	2,50
1,50	8-10	8,03	1,70	1,56	1	2,50
1,80	12	9,91	2,10	1,95	1	2,50
2,10	14	11,59	1,20	1,02	2	2,50
3,00	16-20	15,45	1,60	1,35	2	2,50
3,60	22-24	20,28	2,10	1,79	2	2,50
4,80	26-32	25,03	1,7	1,57	3	2,50
6,00	34-40	30,93	2,10	1,94	3	2,50
7,50	42-50	41,23	2,10	1,95	4	2,50



Rectangular tanks

$Q_d$	PE	Volume	$H_{W \max}$	$H_{W \min}$	Number of chambers	Length	Width
[m <sup>3</sup> /d]		[m <sup>3</sup> ]	[m]	[m]		[m]	[m]
0,60	4	3,46	1,20	1,05	2	1,20	1,20
0,90	6	4,9	1,70	1,51	2	1,20	1,20
1,20	8	6,66	1,70	1,53	2	1,40	1,40
1,50	10	7,84	2,00	1,85	2	1,40	1,40
1,80	12	9,52	1,70	1,57	2	2,00	1,40
2,40	14-16	12,75	1,70	1,57	2	2,50	1,50
3,00	18-20	15,75	2,10	1,94	2	2,50	1,50
3,60	22-24	19,13	1,70	1,57	3	2,50	1,50
4,20	26-28	22,5	2,00	1,85	3	2,50	1,50
5,10	30-34	26,62	1,80	1,66	3	2,90	1,70
6,00	36-40	31,06	2,10	1,94	3	2,90	1,70
6,60	42-44	34,02	1,80	1,66	3	3,50	1,80
7,50	46-50	39,69	2,10	1,94	3	3,50	1,80



--- on-site

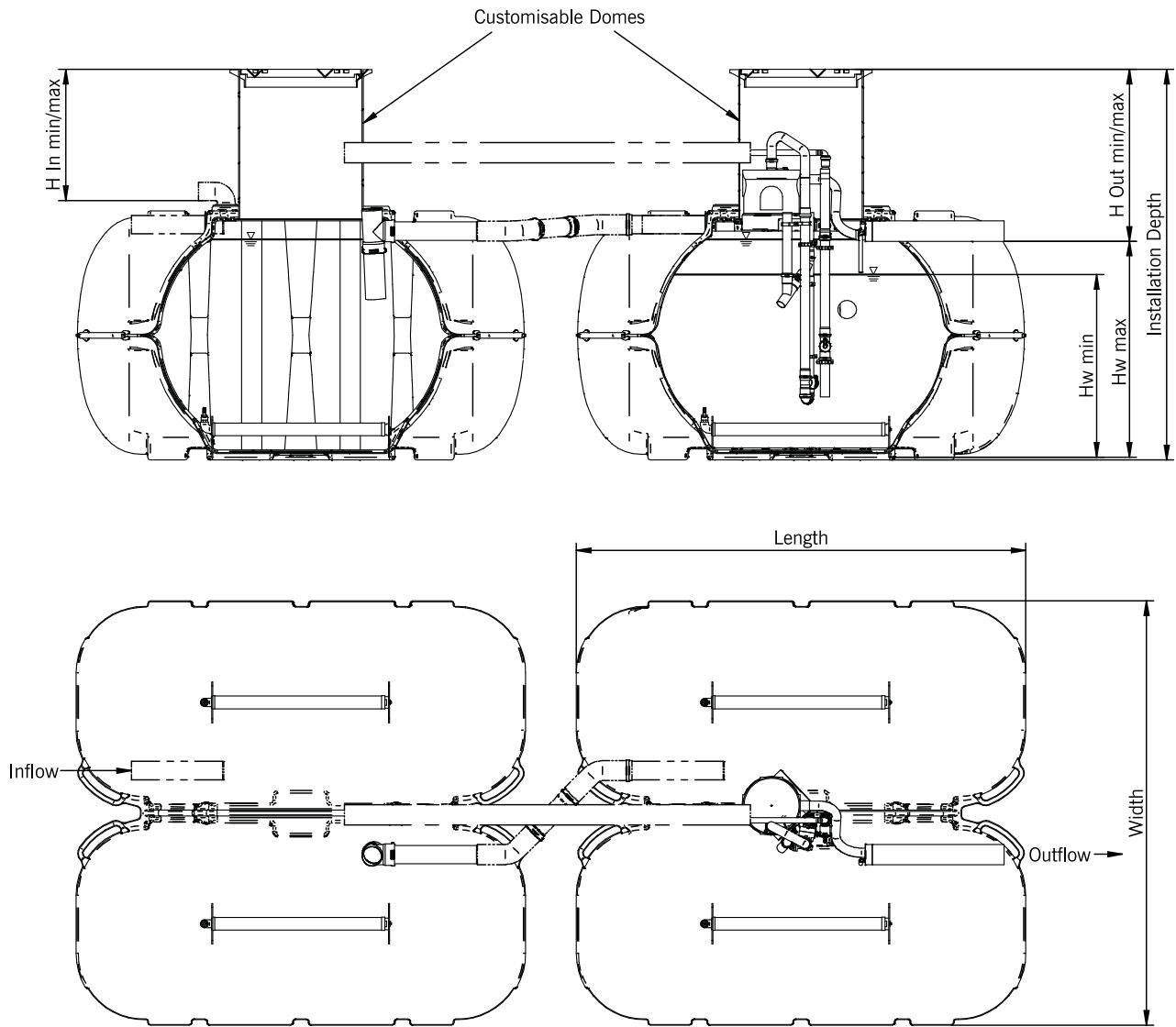
Single tank

Two-chamber system

Walkable cover

Art.-No.	$Q_d$	PE	Volume	$H_{W \min}$	$H_{W \max}$	Length	Width	Installation depth min/max	Inflow depth min/max	Outflow depth min/max	Cover and dome	Weight	Price
	[m <sup>3</sup> /d]		[m <sup>3</sup> ]	[m]	[m]	[m]	[m]	[m]	$H_{In \min/max}$ [m]	$H_{Out \min/max}$ [m]	[Ø]	[kg]	[€]
110009	0,90	4-6	4,94	1,03	1,18	2,46	2,35	1,75 / 2,05	0,52 / 0,82	0,57 / 0,87	600	190	4.433,00

Cover and dome Ø 600 | Dome customisable  
 Additional shaft extension 500 mm (Art.-No. 186012) 186,50 €



--- on-site

Multiple tanks

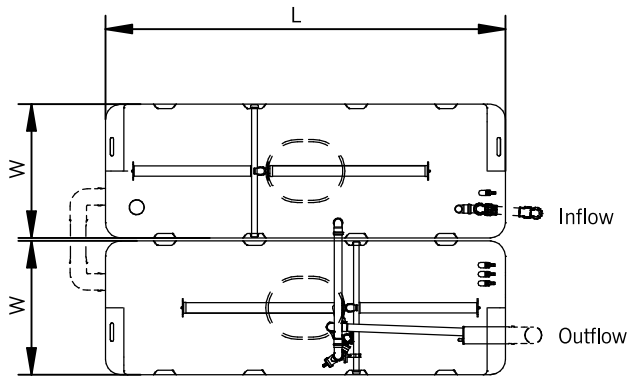
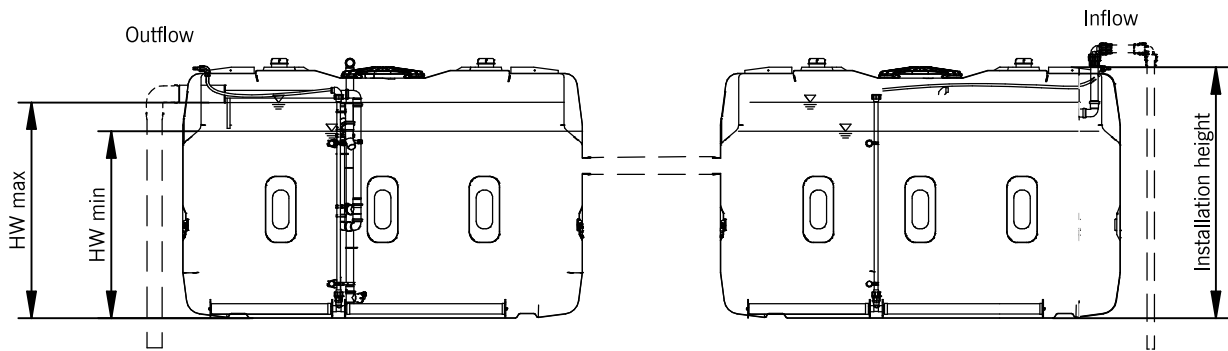
Multiple chambers

Walkable cover

Art.-No.	$Q_d$	PE	Tanks	Volume	$H_{W \min}$	$H_{W \max}$	Length	Width	Installation depth min/max	Inflow depth min/max	Outflow depth min/max	Weight	Price
	[m <sup>3</sup> /d]			[m <sup>3</sup> ]	[m]	[m]	[m]	[m]	[m]	$H_{In \min/max}$ [m]	$H_{Out \min/max}$ [m]	[kg]	[€]
110061	1,50	8–10	2	9,89	0,99	1,18	2,46	2,35	1,75 / 2,05	0,37 / 0,67	0,57 / 0,87	380	6.391,00
110062	1,80	12	2	9,89	0,99	1,18	2,46	2,35	1,75 / 2,05	0,37 / 0,67	0,57 / 0,87	380	6.724,00
	2,40	14–16 (RSS) <sup>1</sup>			0,96								
110280	2,40	14–16	3	14,84	0,99	1,18	2,46	2,35	1,75 / 2,05	0,37 / 0,67	0,57 / 0,87	570	9.575,00
	3,00	18–20 (RSS) <sup>1</sup>			0,93								
110281	3,60	22–24 (RSS) <sup>1</sup>	3	14,84	0,88	1,18	2,46	2,35	1,75 / 2,05	0,37 / 0,67	0,57 / 0,87	570	10.556,00

Cover and dome Ø 600 | Dome customisable  
 Additional shaft extension 500 mm (Art.-No. 186012) 186,50 €

<sup>1</sup> With reduced sludge storage



--- on-site



Multiple tanks

Multiple chambers

Above-ground installation

Art.-No.	$Q_b$ [m <sup>3</sup> /d]	PE	Tanks	Volume [m <sup>3</sup> ]	$H_{W \text{ min}}$ [m]	$H_{W \text{ max}}$ [m]	Length [m]	Width [m]	Installation height [m]	Cover [mm]	Weight [kg]	Price [€]
110197	0,90	4-6	2	5,34	1,25	1,38	2,63	0,88	1,65	520x415	280	4.792,00
110243	1,50	8-10	3	8,01	1,32	1,38	2,63	0,88	1,65	520x415	420	6.515,00
110223	1,80	12	4	10,68	1,32	1,38	2,63	0,88	1,65	520x415	560	8.500,00
	2,55	14-17 (RSS) <sup>1</sup>			1,29							

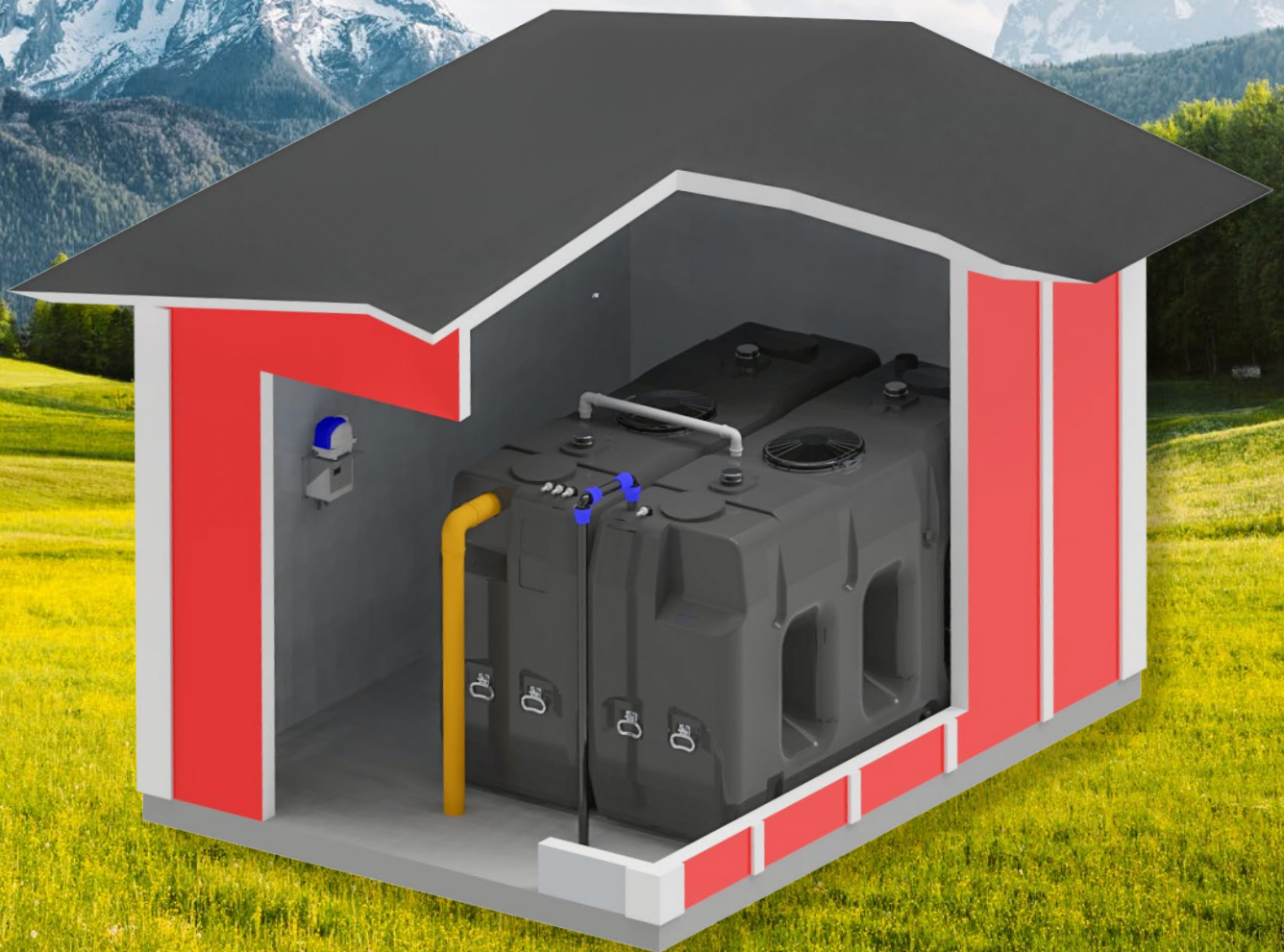
<sup>1</sup> With reduced sludge storage

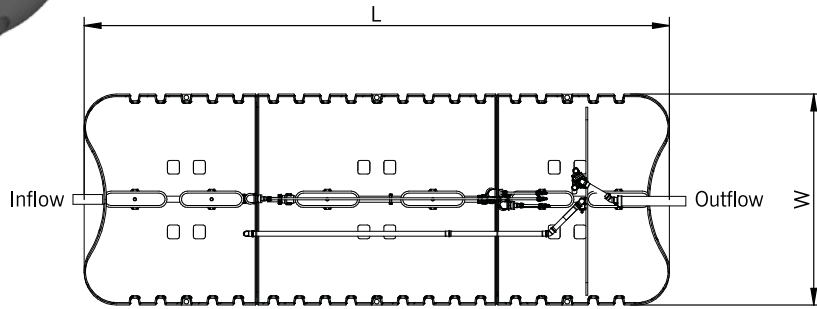
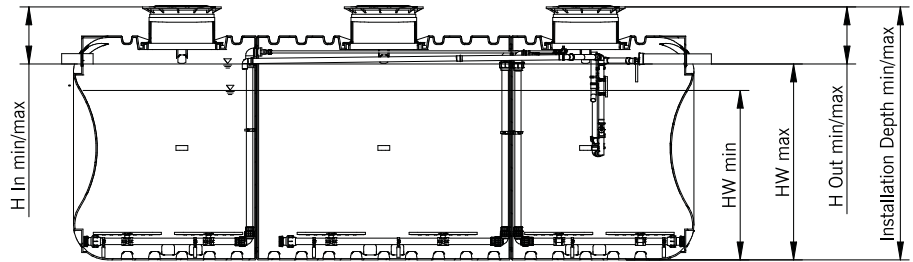
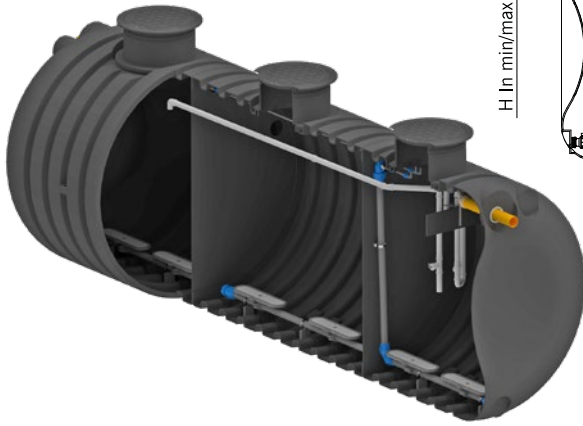
Full plant without sampler. Sampling shaft type 300 optional (Art.-No. 102611) 202,00 €  
Optionally available with perrot coupling (Art.-No. 186018) 186,50 €



# Customised solutions?

We are happy to advise you!





--- on-site

Single tank

Multiple chambers

Walkable cover

Art.-No.	$Q_D$	PE	Volume	$H_{W\ min}$	$H_{W\ max}$	Length	Width	Installation depth <sup>1</sup> min/max	Inflow depth <sup>1</sup> min/max	Outflow depth <sup>1</sup> min/max	Cover and dome	Weight	Price
	[m <sup>3</sup> /d]			[m <sup>3</sup> ]	[m]				[m]	[m]			
110200	2,10	14	11,30	1,75	1,90	3,50	2,20	2,65 / 2,89	0,75 / 0,99	0,75 / 0,99	2x600	550	12.197,50
	2,70	16-18 (RSS) <sup>2</sup>		1,71									
110201	3,75	20-25	19,55	1,74	1,90	6,00	2,20	2,65 / 2,89	0,75 / 0,99	0,75 / 0,99	3x600	830	19.178,00
	4,80	26-32 (RSS) <sup>2</sup>		1,70									
110202	5,40	26-36	27,78	1,74	1,90	8,50	2,20	2,65 / 2,89	0,75 / 0,99	0,75 / 0,99	3x600	1.100	23.626,50
	6,75	37-45 (RSS) <sup>2</sup>		1,70									
110205	6,90	37-46	36,02	1,74	1,90	11,00	2,20	2,65 / 2,89	0,75 / 0,99	0,75 / 0,99	3x600	1.390	28.330,00
110203	7,50	47-50 (RSS) <sup>2</sup>	36,02	1,73	1,90	11,00	2,20	2,65 / 2,89	0,75 / 0,99	0,75 / 0,99	3x600	1.390	29.530,00
110206	7,50	47-50	44,25	1,76	1,90	13,50	2,20	2,65 / 2,89	0,75 / 0,99	0,75 / 0,99	3x600	1.670	33.760,00

<sup>1</sup> Telescopic dome

<sup>2</sup> With reduced sludge storage

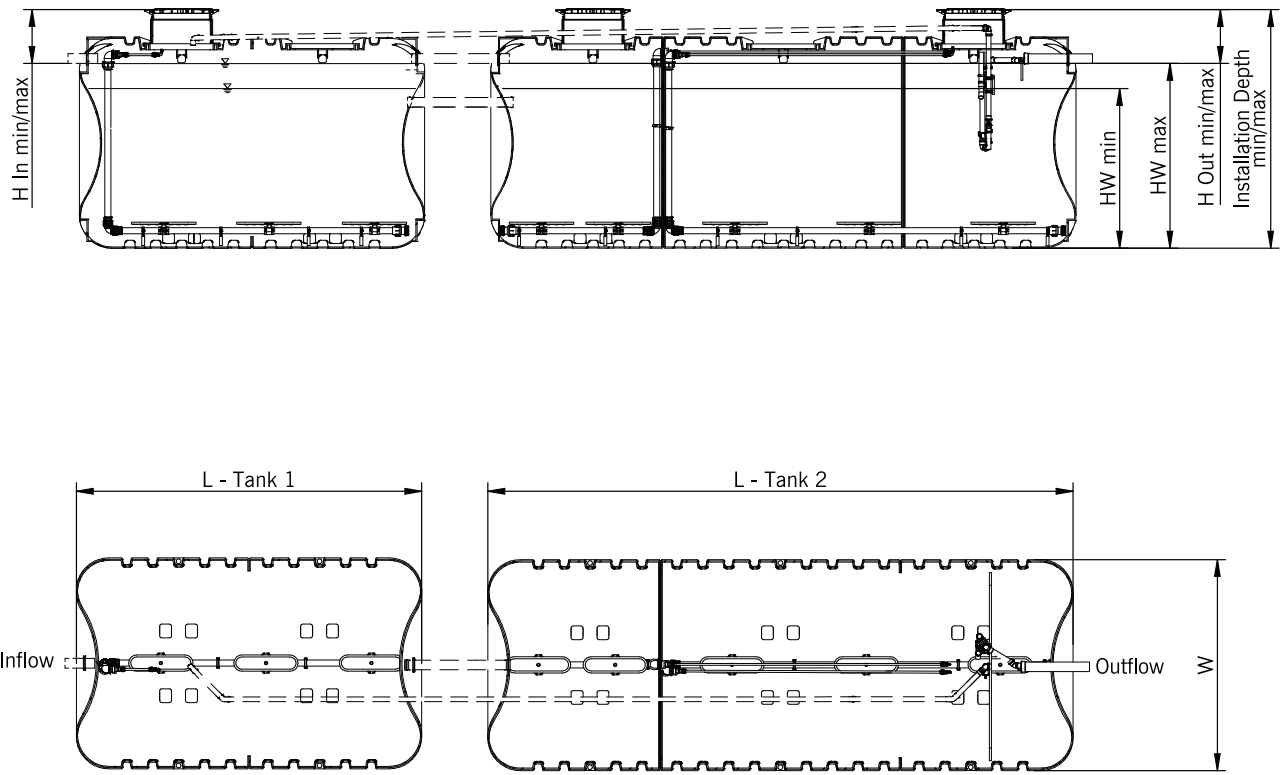
Additional dome extension 240 mm (Art.-No. 189062) 92,50 €

Car trafficable cover up to 600 kg wheel load (Art.-No. 189023), for 1 dome 179,50 €

Set for lorry trafficability SLW 30 (Art.-No. 189004), for 1 dome 406,00 €

for concrete cover (cover not included in the contents of delivery)

Prefabricated plant comes with sampling shaft Ø 600 mm / H = 1,66 m



--- on-site

Multiple tanks

Multiple chambers

Walkable cover

Art.-No.	$Q_d$	PE	Volume	$H_{W \min}$	$H_{W \max}$	Length Tank 1 / 2	Width	Installation depth <sup>1</sup> min/max	Inflow depth <sup>1</sup> min/max	Outflow depth <sup>1</sup> min/max	Cover and dome	Weight Tank 1 / 2	Price
	[m <sup>3</sup> /d]		[m <sup>3</sup> ]	[m]	[m]	[m]	[m]	[m]	$H_{In}$ [m]	$H_{Out}$ [m]	[Ø]	[kg]	[€]
110207	6,00	37-40	30,85	1,74	1,90	3,50 / 6,00	2,20	2,65 / 2,89	0,75 / 0,99	0,75 / 0,99	3x600	830 / 550	25.100,00
110208	7,50	46-50 (RSS) <sup>2</sup>	30,85	1,70	1,90	6,00 / 3,50	2,20	2,65 / 2,89	0,75 / 0,99	0,75 / 0,99	3x600	830 / 550	26.290,00
110209	7,50	41-50	39,10	1,74	1,90	6,00 / 6,00	2,20	2,65 / 2,89	0,75 / 0,99	0,75 / 0,99	3x600	830 / 550	30.900,00

<sup>1</sup> Telescopic dome

<sup>2</sup> With reduced sludge storage

Additional dome extension 240 mm (Art.-No. 189062) 92,50 €  
 Car trafficable cover up to 600 kg wheel load (Art.-No. 189023), for 1 dome 179,50 €

Set for lorry trafficability SLW 30 (Art.-No. 189004), for 1 dome 406,00 €  
 for concrete cover (cover not included in the contents of delivery)

Prefabricated plant comes with sampling shaft Ø 600 mm / H = 1,66 m

# SBR

Sewage treatment plants  
KOM

**Durable**, proven,  
reliable.

- \_ Highest adaptability
- \_ Significantly below the effluent limits
- \_ Easy installation and handling
- \_ Low maintenance costs



## Advantages at a glance

- Stable and well tested process
- Submersible motor pump optional
- Low maintenance costs due to simple handling
- Low wear
- Underload and overload capable
- Energy efficient
- Inexpensive and economical to operate



AQUATO® KOM

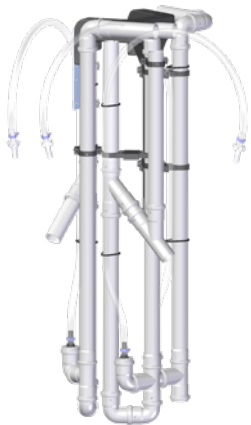
AQUATO® KOM-PAKT  
Lifting unit on a practical bracketControl  
K-Pilot 18.1/18.3  
with wall console

Plate diffuser

Art.-No.	Type	PE	Control	*Compressor	*Number of diffusers	Price
				[l/min]		
112001	KOM	4–6	K-Pilot 18.1	80	1 / Plate	2.110,50
112002		7–11	K-Pilot 18.1	120	1 / Plate	2.265,50
112003		12–16	K-Pilot 18.1	150	2 / Plate	2.615,00
112004		17–20	K-Pilot 18.1	200	2 / Plate	2.734,50
112092		17–28 ECO	K-Pilot 18.3	200	2 / Plate	2.798,50
112006		21–30	K-Pilot 18.3	2 x 150	3 / Plate	4.109,00
112007		31–40	K-Pilot 18.3	2 x 200	4 / Plate	4.370,50
112008		41–50	K-Pilot 18.3	3 x 200	6 / Plate	5.652,00
112020	KOM-PAKT	4–6	K-Pilot 18.1	80	1 / Plate	2.312,50
112021		7–11	K-Pilot 18.1	120	1 / Plate	2.473,50
112022		12–16	K-Pilot 18.1	150	2 / Plate	2.810,50
112025		17–20	K-Pilot 18.1	200	2 / Plate	2.942,00

All article variants include: lifting unit, control unit, compressor, plate diffuser, installation material and fabric hose

\* Standard version

## Wastewater treatment specifications according to PE - volume tables

### with sludge storage

PE	Q <sub>D</sub> [m <sup>3</sup> /d]	V <sub>tot</sub> [m <sup>3</sup> ]	V <sub>S</sub> [m <sup>3</sup> ]	V <sub>B</sub> [m <sup>3</sup> ]	V <sub>R</sub> [m <sup>3</sup> ]
4	0,60	2,64	1,00	0,44	1,20
6	0,90	3,86	1,50	0,56	1,80
8	1,20	5,08	2,00	0,68	2,40
10	1,50	6,10	2,50	0,60	3,00
12	1,80	7,32	3,00	0,72	3,60
14	2,10	8,54	3,50	0,84	4,20
16	2,40	9,76	4,00	0,96	4,80
18	2,70	10,98	4,50	1,08	5,40
20	3,00	12,20	5,00	1,20	6,00
22	3,30	13,42	5,50	1,32	6,60
24	3,60	14,64	6,00	1,44	7,20
26	3,90	15,86	6,50	1,56	7,80
28	4,20	17,08	7,00	1,68	8,40
30	4,50	18,30	7,50	1,80	9,00
32	4,80	19,52	8,00	1,92	9,60
34	5,10	20,74	8,50	2,04	10,20
36	5,40	21,96	9,00	2,16	10,80
38	5,70	23,18	9,50	2,28	11,40
40	6,00	24,40	10,00	2,40	12,00
42	6,30	25,62	10,50	2,52	12,60
44	6,60	26,84	11,00	2,64	13,20
46	6,90	28,06	11,50	2,76	13,80
48	7,20	29,28	12,00	2,88	14,40
50	7,50	30,50	12,50	3,00	15,00

Dimensioning of the pre-treatment with:  
250 l/(PE·d)

PE = Population equivalent  
V<sub>tot</sub> = [m<sup>3</sup>] Total volume  
V<sub>S</sub> = [m<sup>3</sup>] Sludge storage volume  
V<sub>B</sub> = [m<sup>3</sup>] Buffer volume  
V<sub>R</sub> = [m<sup>3</sup>] Reactor volume

### Control K-Pilot 18.1/18.3

- Compact design thanks to integrated rotary valve with step motor
- Very quiet in operation
- Modern control system for reliable operation
- Graphic display
- Safe and easy handling
- Back pressure monitoring

The K-Pilot 18.3 control unit is required for special applications such as

- Phosphate elimination
- Hygienization
- Carbon dosing
- Connection of a clear water pump
- Connection of additional compressors

The K-Pilot 18.1 can be used for up to 20 PE.  
The K-Pilot 18.3 can be used for up to 50 PE.



**IoT**

optionally with module for remote monitoring via WLAN or GSM



*Optional: Wall cabinet 6N (W x H x D: 530 x 580 x 250 mm)  
Art.-No. 102354 (without compressor + control)  
Wall cabinet can be used for up to 20 PE*



*Optional: Street cabinet 6.1T  
(W x H x D: 400 x 1275 x 320 mm)  
Art.-No. 102603  
(without compressor + control)  
Street cabinet can be used for up to 20 PE*



*Optional: Street cabinet X7 (W x H x D: 422 x 1510 x 316 mm)  
Art.-No. 101932 - Grey  
Art.-No. 101960 - Green  
(without compressor + control)*

*Street cabinet can be used for up to 20 PE*

**Further street cabinets / installation variants can be found in the chapter "Cabinets".**

## Compressor

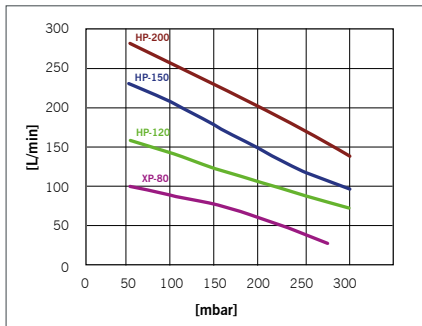
The XP-80 can be used in **water depths of up to 1.8 m.**  
 HP-120 to HP-200 can be used up to a **water depth of 2.1 m.**



**Hiblow XP-80**



**Hiblow HP-200**



Compressor replacement	Surcharge
XP-80 to HP-120	185,50 €
XP-80 to HP-150	475,50 €
XP-80 to HP-200	633,50 €
HP-120 to HP-150	290,00 €
HP-120 to HP-200	448,00 €
HP-150 to HP-200	158,00 €

## Sampling pit type 300

- Downstream shaft
- Large diameter for convenient sampling with sampling cup
- Forced flow



*Downstream  
sampling shaft*



## Sampler type Mono D 100/150

Art.-No.	Article description	Volume	Price
112096	Sampler type Mono D 100/150 (concrete)	7 liters	88,00 €
103405	Sampler type Mono D 100/150 (plastic)	7 liters	88,00 €

## Sampler with sampling cup



Art.-No. 112051  
 Art.-No. 112054

Art.-No.	Article description	Volume	Price
112051	Sampler with sampling cup (concrete)	1,6 liters	101,50 €
112054	Sampler with sampling cup (pe)	1,6 liters	101,50 €
100651	Sampler XL	3,6 liters	186,50 €
102611	Sampling pit with cover, walkable - Type 300	21 liters	202,00 €
102615	Extension for shaft - 600 mm / Ø 310 mm	—	65,50 €





Emergency overflow  
Art.-No. 100630 Ø 100  
Art.-No. 100635 Ø 150

Clear water pump, model 1  
Art.-No. 121027

Clear water pump, model 3  
Art.-No. 121026  
(air-lift and partition wall bracket  
not included in the contents of delivery)

Chain hanger for excess sludge lifter  
+ clear water lifter  
Art.-No. 121101  
(for mounting in concrete tanks)  
Art.-No. 121103  
(for mounting in plastic tanks)

Chain hanger for air-lift  
Art.-No. 121102  
(for mounting in concrete tanks)  
Art.-No. 121104  
(for mounting in plastic tanks)



Traverse set for retrofitting  
in 1-chamber concrete tanks  
Art.-No. 103018



Float switch  
Art.-No. 100023



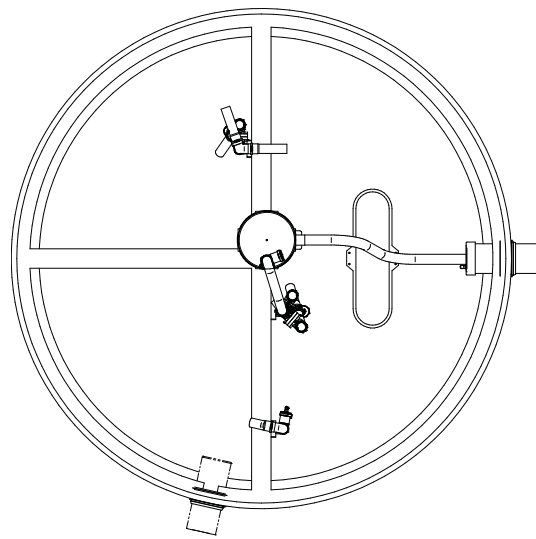
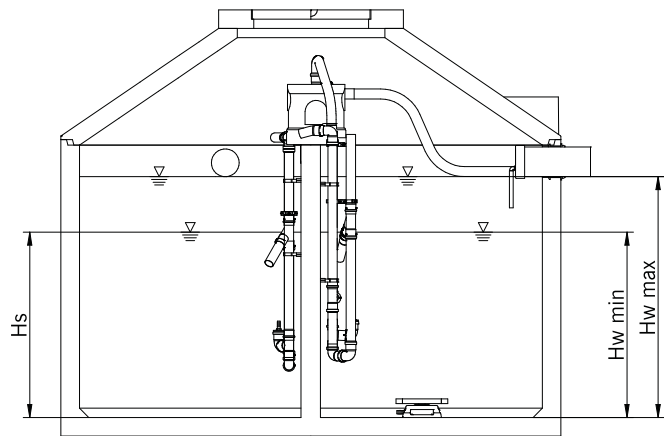
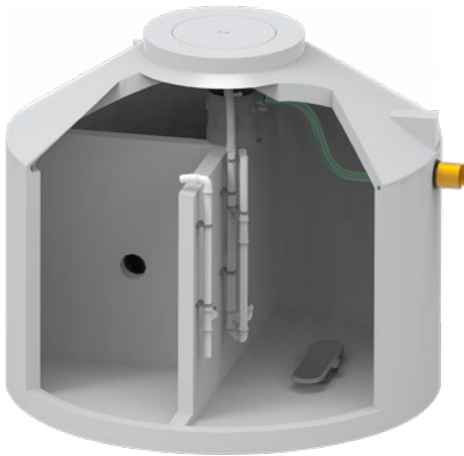
Additional plate diffuser  
Art.-No. 101555 for Ø 16 mm air hose

Art.-No.	Article description	Note	Price
100023	KOM / STABI-KOM float switch with 10 metre cable	1	87,00 €
100630	Emergency overflow Ø 100 mm		42,00 €
100635	Emergency overflow Ø 150 mm		36,00 €
101555	Additional plate diffuser, ready for connection to 16 mm air hose		149,50 €
121027	Clear water pump for KOM / STABI-KOM model 1, with 10 metre cable	1, 2	626,50 €
121026	Clear water pump for KOM-PAKT / STABI-KOM-PAKT model 3, with 10 metre cable	1, 2, 3	590,50 €
121101	Chain hanger for excess sludge lifter + clear water lifter (for concrete tanks)		267,50 €
121102	Chain hanger for air-lift (for concrete tanks)		267,50 €
121103	Chain hanger for excess sludge lifter + clear water lifter (for plastic)		267,50 €
121104	Chain hanger for air-lift (for plastic tanks)		267,50 €
103018	Traverse set for lifter installation, pre-assembled, for concrete tanks Ø 2.00 m to 2.50 m		374,00 €

<sup>1</sup> Other cable lengths on request

<sup>2</sup> With sampling cup

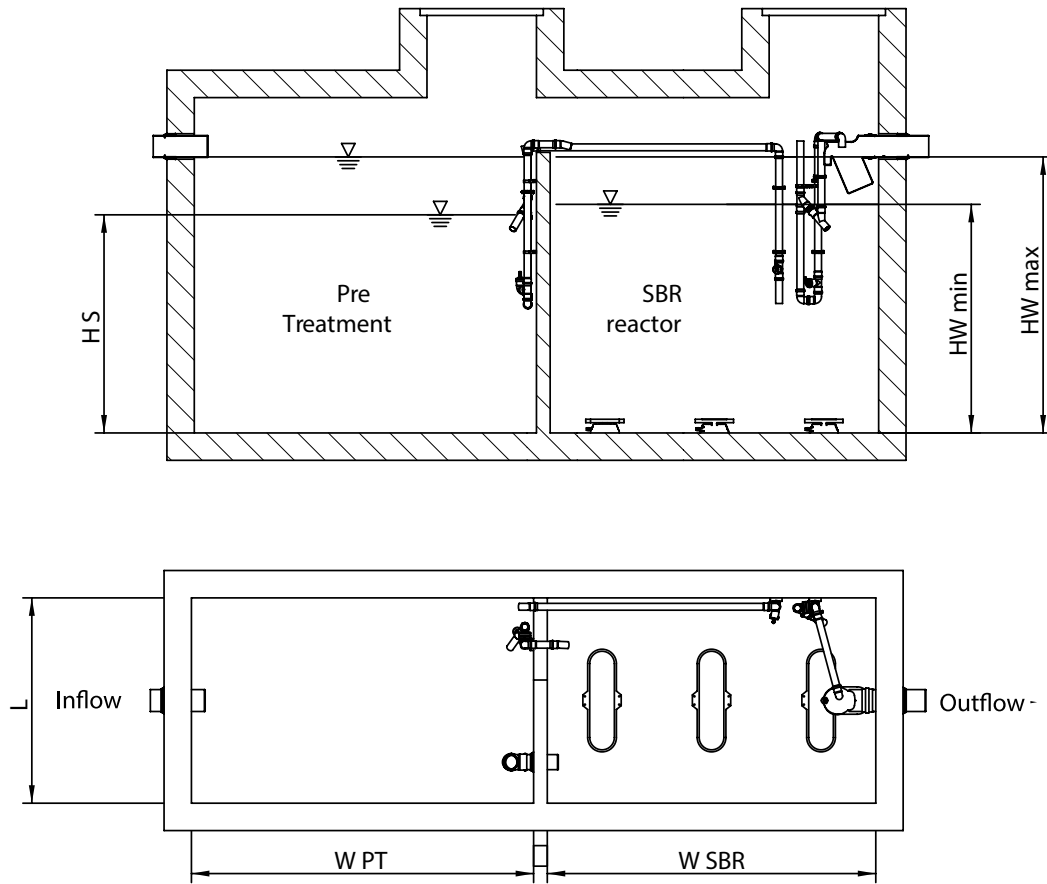
<sup>3</sup> Only for KOM-PAKT / STABI-KOM-PAKT



--- on-site

### Round tanks

$Q_d$	PE	Volume	$H_{W \max}$	$H_{W \min}$	$H_s$	Number of tanks	$\varnothing$
[m <sup>3</sup> /d]		[m <sup>3</sup> ]	[m]	[m]	[m]		[m]
0,60	4	4,25	1,45	1,14	1,14	1	2,00
1,20	6-8	6,02	1,30	1,00	1,00	1	2,50
1,50	10	7,87	1,70	1,44	1,44	1	2,50
2,10	12-14	9,72	2,10	1,73	1,73	1	2,50
2,70	16-18	12,52	1,30	1,07	1,07	2	2,50
3,60	20-24	16,37	1,70	1,39	1,39	2	2,50
5,10	26-34	25,03	1,70	1,35	1,35	3	2,50
6,30	36-42	30,93	2,10	1,67	1,67	3	2,50
7,50	44-50	33,38	1,70	1,39	1,39	4	2,50



--- on-site

Rectangular tanks

$Q_d$	PE	Volume	$H_{W \max}$	$H_{W \min}$	$H_s$	Number of chambers	Length	$W_{PT}$	$W_{SBR}$
[m <sup>3</sup> /d]		[m <sup>3</sup> ]	[m]	[m]	[m]		[m]	[m]	[m]
0,60	4	2,74	1,20	1,01	0,83	2	1,20	1,00	0,90
0,90	6	4,03	1,40	1,17	1,04	2	1,20	1,30	1,10
1,20	8	5,18	1,60	1,34	1,20	2	1,20	1,40	1,30
1,50	10	6,26	1,80	1,50	1,47	2	1,20	1,50	1,40
1,80	12	7,56	1,80	1,51	1,47	2	1,20	1,80	1,70
2,40	14-16	10,08	1,80	1,51	1,46	2	1,40	2,00	2,00
3,00	18-20	12,6	2,00	1,68	1,63	2	1,40	2,30	2,20
3,60	22-24	14,7	2,00	1,67	1,62	2	1,50	2,50	2,40
4,50	26-30	18,3	2,00	1,67	1,61	2	1,50	3,10	3,00
5,10	32-34	21,42	2,10	1,76	1,71	2	1,70	2,60	2,50
6,00	36-40	23,1	2,10	1,77	1,62	2	2,00	3,00	3,00
6,60	42-44	27,72	2,10	1,76	1,71	2	2,40	2,80	2,70
7,50	46-50	30,74	2,10	1,75	1,70	2	2,40	3,10	3,00

# PUMP

Sewage treatment plants  
SBR process  
Pump technology

**Compact**, economical,  
powerful.

- \_ For all approved tank geometries
- \_ Easy handling and maintenance
- \_ Energy-efficient and powerful
- \_ Individual adjustment options



### Advantages at a glance

- Easy to install system
- Maximum adaptability due to individual adjustment options
- Long service life thanks to proven units
- Energy-efficient with high performance
- Low maintenance costs thanks to simple handling
- Energy-saving thanks to integrated economy mode
- Significantly below the required effluent limits
- Suitable for all approved tank geometries



Art.-No.	Article description	Suitable up to PE	Price
111001	AQUATO® PUMP 4-16 PE TW	04 – 16	2.120,50 €
111014	AQUATO® PUMP 4-16 PE KE	04 – 16	2.120,50 €
111015	AQUATO® PUMP 17-28 PE TW	17 – 28	3.135,50 €
111016	AQUATO® PUMP 17-28 PE KE	17 – 28	3.135,50 €
111017	AQUATO® PUMP 29-50 PE KE	29 – 50	4.138,00 €

TW = Partition wall bracket  
KE = Chain hanger

Surcharge for control cable (standard length: 15 m)

Article description	Surcharge
20 m control cable	33,00 €
25 m control cable	51,50 €
30 m control cable	71,00 €
35 m control cable	92,50 €
40 m control cable	120,00 €
50 m control cable	166,50 €

### Control K-Pilot 8.3

- Ready to plug in
- Integrated power failure detector
- Economy mode
- Power monitoring of all units
- Separate operating level for operators and maintenance technicians
- Operating hours counter
- Acoustic and visual error message
- Readable error logbook
- Software update possible



IoT

optionally with module for remote monitoring via WLAN or GSM



### Wall cabinet



Prepared for control 8.3  
 With transparent door  
 230V socket for mains connection  
 External dimensions: W 300 mm x H 300 mm x D 180 mm  
 Metal mounting plate W 270 mm x H 270 mm  
 Usable depth approx. 160 mm  
 2 snap locks  
 Art.-No. 100556

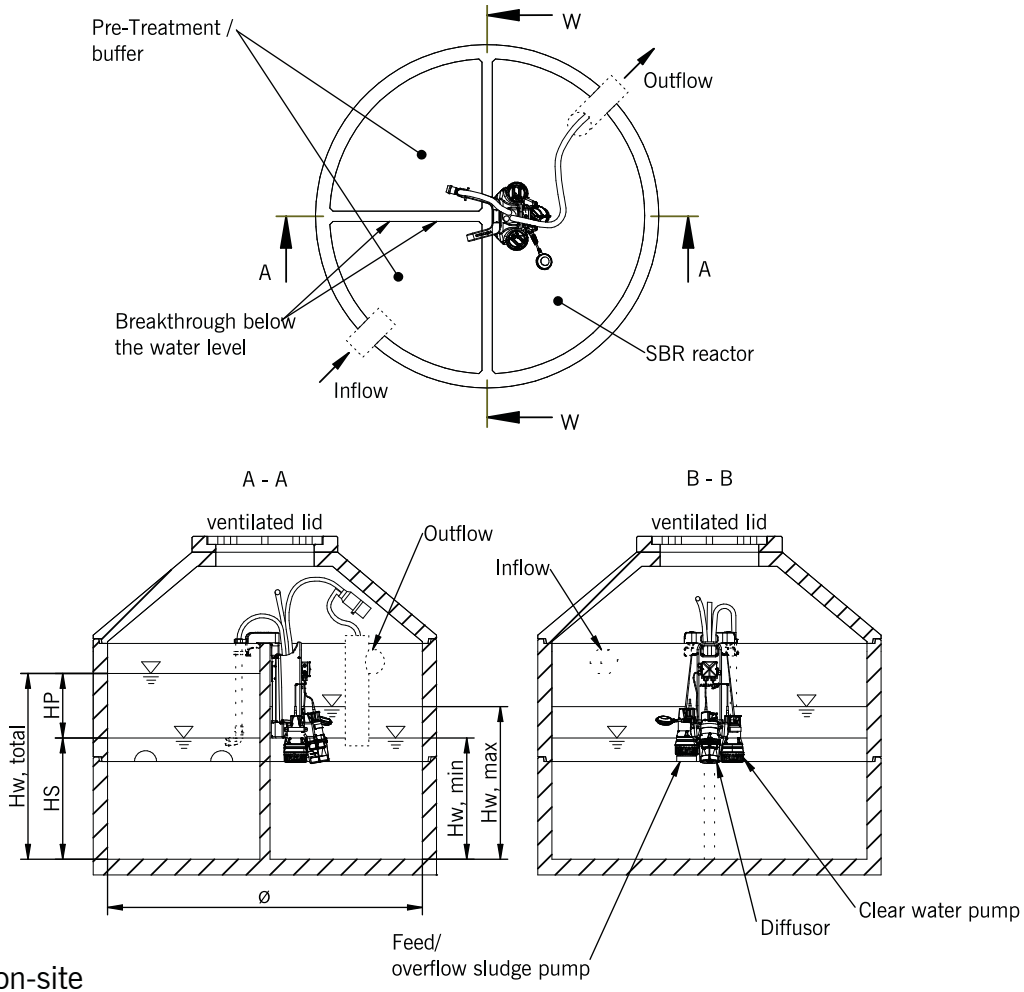
### Feeding hose hanger



Hanger  
 feeding hose  
 Art.-No. 111021

Art.-No.	Article description	Unit	Price
100556	Wall cabinet, prepared, W 300 x H 300 x D 180 mm	Piece	150,00 €
111021	Hanger feeding hose Ø 30 mm including fastening material	Piece	126,00 <sup>1</sup> / 122,00 <sup>2</sup> €

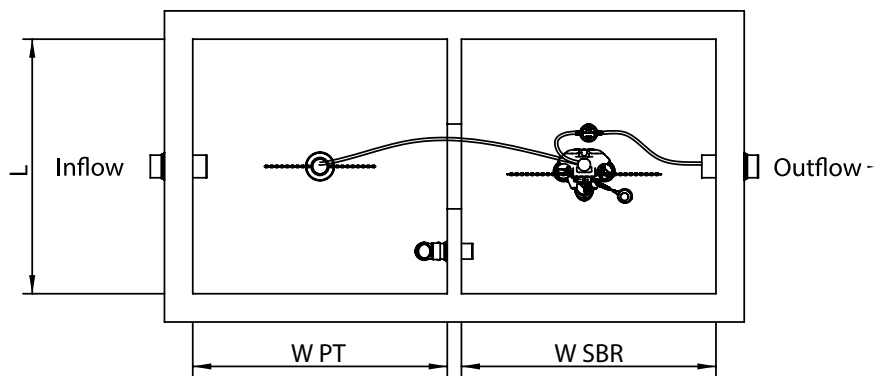
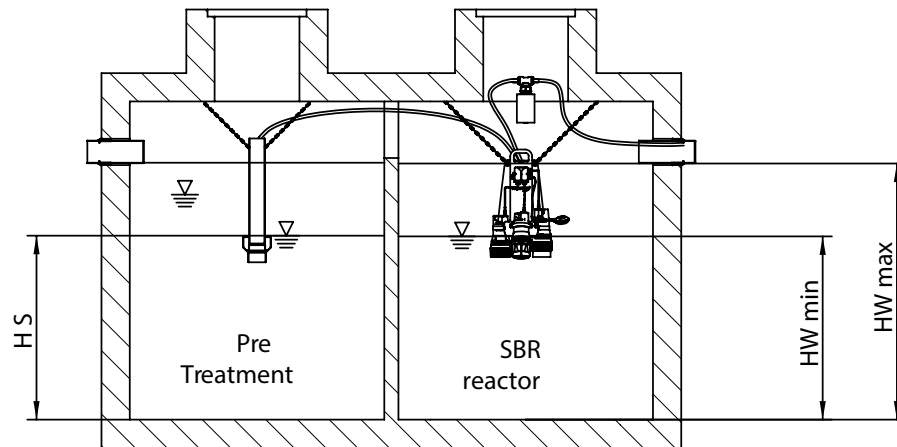
<sup>1</sup> For plastic tanks  
<sup>2</sup> For concrete tanks



Round tanks

$Q_d$	PE	Volume	$H_{W \max}$	$H_{W \min}$	$H_s$	Number of tanks	$\emptyset$
[m <sup>3</sup> /d]		[m <sup>3</sup> ]	[m]	[m]	[m]		[m]
0,60	4	4,25	1,45	1,14	1,14	1	2,00
1,20	6-8	6,02	1,30	1,00	1,00	1	2,50
1,50	10	7,87	1,70	1,44	1,44	1	2,50
2,10	12-14	9,72	2,10	1,73	1,73	1	2,50
2,70	16-18	12,52	1,30	1,07	1,07	2	2,50
3,60	20-24	16,37	1,70	1,39	1,39	2	2,50
5,10	26-34	25,03	1,70	1,35	1,35	3	2,50
6,30	36-42	30,93	2,10	1,67	1,67	3	2,50
7,50	44-50	33,38	1,70	1,39	1,39	4	2,50





--- on-site

Rectangular tanks

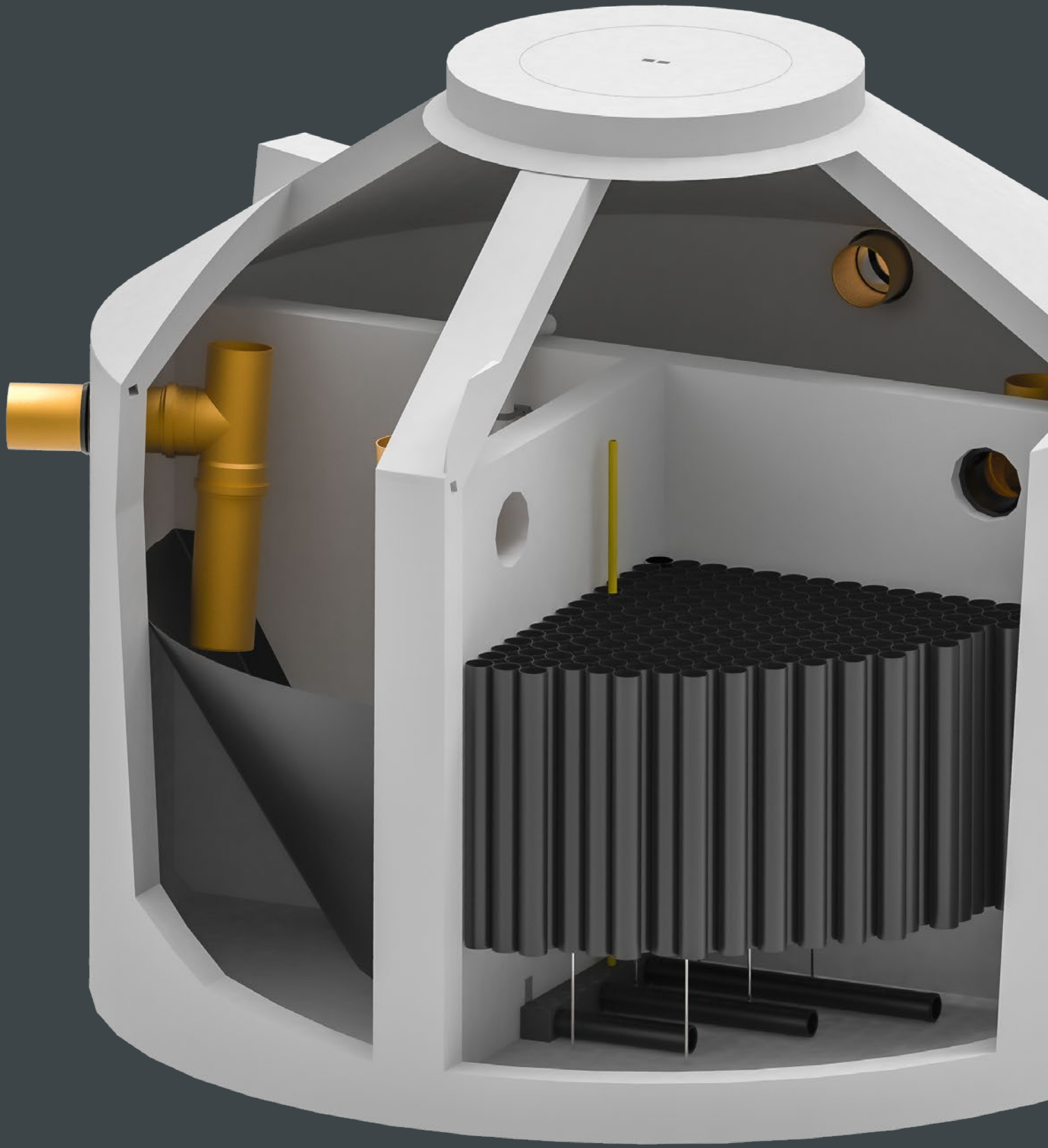
$Q_d$	PE	Volume	$H_{W \max}$	$H_{W \min}$	$H_s$	Number of chambers	Length	$W_{PT}$	$W_{SBR}$
[m <sup>3</sup> /d]		[m <sup>3</sup> ]	[m]	[m]	[m]		[m]	[m]	[m]
0,60	4	2,9	1,20	0,84	0,84	2	1,10	1,10	1,10
0,90	6	4,35	1,45	1,06	1,09	2	1,20	1,30	1,20
1,20	8	5,41	1,60	1,20	1,20	2	1,30	1,30	1,30
1,50	10	6,27	1,60	1,29	1,29	2	1,40	1,40	1,40
1,80	12	7,69	1,60	1,30	1,30	2	1,55	1,55	1,55
2,40	14-16	10,37	1,60	1,30	1,30	2	1,80	1,80	1,80
3,00	18-20	12,96	2,00	1,63	1,63	2	1,80	1,80	1,80
3,60	22-24	15,21	2,00	1,62	1,62	2	1,95	1,95	1,95
4,20	26-28	17,64	2,00	1,62	1,62	2	2,10	2,10	2,10
5,10	30-34	21,2	2,00	1,62	1,62	2	2,00	2,65	2,65
6,00	36-40	25,2	2,00	1,62	1,62	2	2,10	3,00	3,00
6,60	42-44	27,72	2,00	1,62	1,62	2	2,10	3,30	3,30
7,50	46-50	31,5	2,00	1,62	1,62	2	2,25	3,50	3,50

# FIXED BED

Sewage treatment plants  
3K-PLUS

**Effective**, simple,  
reliable.

- \_ Wear-free tank internals
- \_ Components made of recyclable material
- \_ Retrofittable in existing tanks
- \_ High cleaning performance



### Advantages at a glance

- Easy to install system
- Wear-free tank installations
- Modular system design
- Underload capable



Fixed bed unit



Excess sludge lifter



Control K-Pilot 18.3 with wall console

Art.-No.		PE	max $W_D$ [m]	*Control	*Compressor [l/min]	Price [€]
700601	3K-PLUS	4-6	1,60	K-Pilot 18.3	80	2.306,50 €
700603		4-8	1,60	K-Pilot 18.3	120	3.408,00 €
700605		9-12	1,90	K-Pilot 18.3	200	3.444,00 €
700624		13-16	2,50	K-Pilot 18.3	DT 4.16 + 40	4.453,50 €
700627		17-20	2,50	K-Pilot 18.3	DT 4.16 + 40	4.951,00 €

Standard equipment design for round tanks. For designing the reactor accordingly, please tell us the construction design with your order!  
Even rectangular tank desing possible!

All article variants include: Lifting unit, control unit, compressor, pipe diffuser, fixed bed, fixed bed support, hold-down device, baffle, installation material and fabric hose

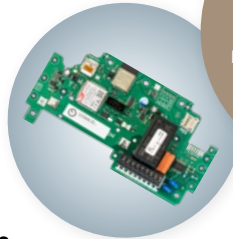
\* Standard

### Control K-Pilot 18.3

- Compact design thanks to integrated rotary valve with step motor
- Modern control system for reliable operation
- Graphic display
- Safe and easy handling
- Connection of an additional clear water pump or buffer pump
- Excess sludge can be set as air-lift or pump
- Additional air-lift can be controlled



Control K-Pilot 18.3  
with wall console



**IoT**  
optionally with module for remote monitoring via WLAN or GSM

### Wastewater treatment specifications according to PE:

PE	Q <sub>D</sub> [m³/d]	V <sub>tot</sub> [m³]	V <sub>PT</sub> [m³]	V <sub>R</sub> [m³]	V <sub>Sed</sub> [m³]
4	0,60	4,00	2,00	1,00	1,00
6	0,90	5,00	2,50	1,25	1,25
8	1,20	6,00	3,00	1,50	1,50
10	1,50	7,20	3,60	1,80	1,80
12	1,80	8,40	4,20	2,10	2,10
14	2,10	9,80	4,90	2,45	2,45
16	2,40	11,20	5,60	2,80	2,80
18	2,70	12,60	6,30	3,15	3,15
20	3,00	14,00	7,00	3,50	3,50
22	3,30	15,40	7,70	3,85	3,85
24	3,60	16,80	8,40	4,20	4,20
26	3,90	18,20	9,10	4,55	4,55
28	4,20	19,60	9,80	4,90	4,90
30	4,50	21,00	10,50	5,25	5,25
32	4,80	22,40	11,20	5,60	5,60
34	5,10	23,80	11,90	5,95	5,95
36	5,40	25,20	12,60	6,30	6,30
38	5,70	26,60	13,30	6,65	6,65
40	6,00	28,00	14,00	7,00	7,00
42	6,30	29,40	14,70	7,35	7,35
44	6,60	30,80	15,40	7,70	7,70
46	6,90	32,20	16,10	8,05	8,05
48	7,20	33,60	16,80	8,40	8,40
50	7,50	35,00	17,50	8,75	8,75

PE = Population equivalent  
V<sub>tot</sub> = [m³] Total volume  
V<sub>PT</sub> = [m³] Pre-treatment volume  
V<sub>R</sub> = [m³] Reactor volume  
V<sub>Sed</sub> = [m³] Sedimentation chamber volume



### Retrofit kits 3K-PLUS-S

3K-PLUS-S variant, can be used for up to 8 PE

The 3K-PLUS-S set-up kit comes with a D-Pilot 22.2 control incl. wall-mounted cabinet instead of the K-Pilot 18.3.

Art.-No.	PE	Price
700631	4–6	2.060,50 €
700633	4–8	3.162,00 €

For designing the aeration and fix bed body accordingly, please tell us the construction design of the reactor with your order!



Control D-Pilot 22.2 including wall cabinet

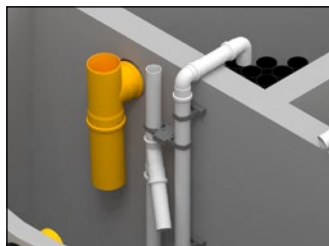
Compressor replacement	Surcharge
AP-80 to AP-120	182,50 €
AP-80 to LP-150	554,50 €
AP-80 to LP-200	675,50 €
AP-120 to LP-150	372,00 €
AP-120 to LP-200	493,00 €
LP-150 to LP-200	121,00 €



Optional: Wall cabinet 6N\* (W x H x D: 530 x 580 x 250 mm)  
 Art.-No. 102354 (without compressor + control)  
 Wall cabinet can be used for up to 20 PE

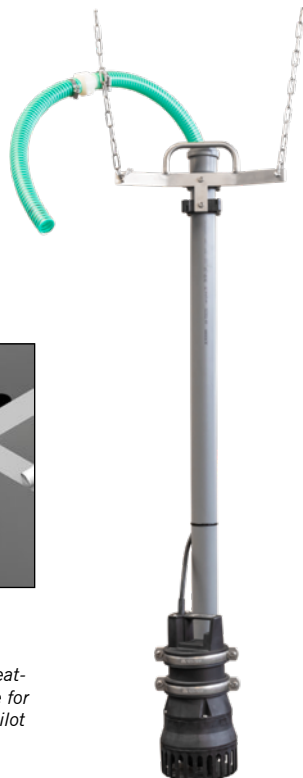


Optional: Street cabinet 6.1T\*  
 (W x H x D: 400 x 1275 x 320 mm)  
 Art.-No. 102603  
 (without compressor + control)  
 Street cabinet can be used for up to 20 PE



Feeding air-lift  
 Art.-No. 700720

Use of feeding air-lift in the pre-treatment to implement a buffer volume for high inflow peaks. Control unit K-Pilot 18.3 needed!

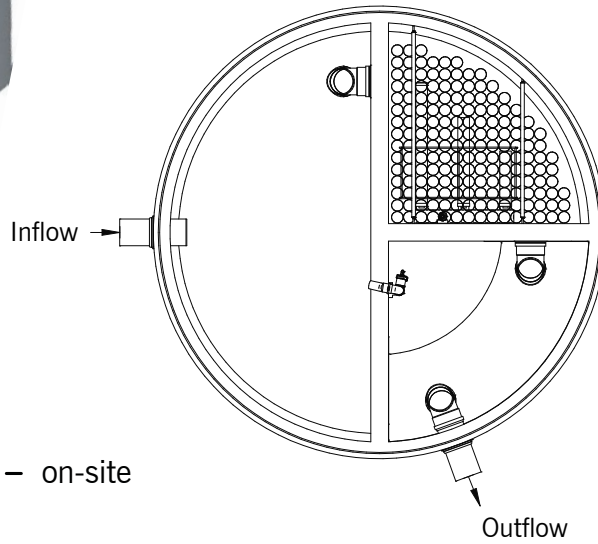
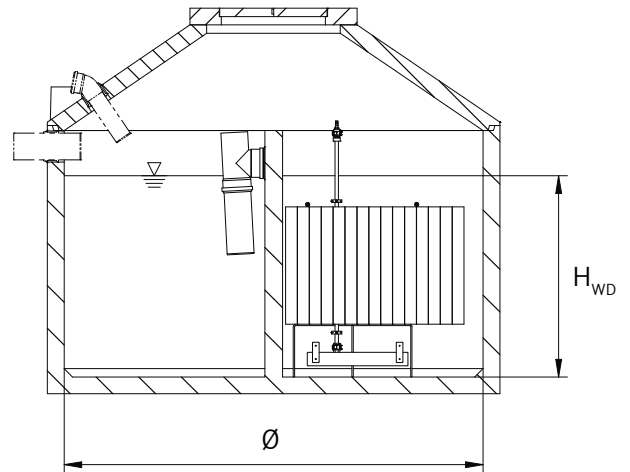
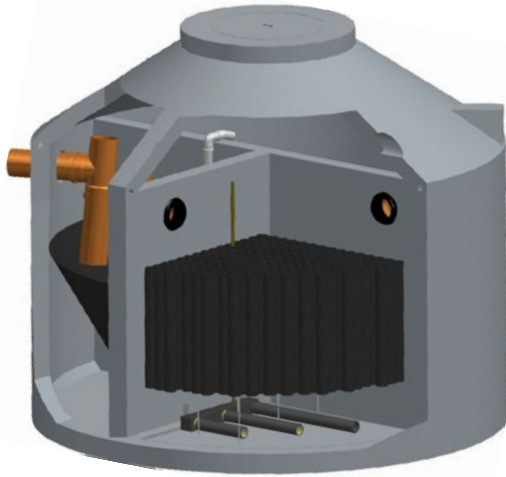


Excess sludge pump, model 1  
 Art.-No. 121137

\* Can be used for set-up kit with diaphragm compressor, Installation for set-up kit with rotary compressor on request.

Art.-No.	Article description	Note	Price
121005	Clear water pump model 1 with 10 metre cable, incl. sampling bottle	1	626,50 €
102451	Buffer / feeding pump model 1 with 10 metre cable	1	582,00 €
121137	Excess sludge pump model 1 with 10 metre cable	1	537,00 €
700720	Additional air-lift for 3K-PLUS with buffer operation in the main flow		145,50 €
700740	PAKT partition wall bracket for 3K-PLUS (for concrete)		193,00€
700741	PAKT partition wall bracket for 3K-PLUS (for plastic)		193,00 €

<sup>1</sup> Other cable lengths on request



Round tanks

$Q_d$	PE	$V_{tot}$	$V_{PT}$	$V_R$	$V_{Sed}$	$H_{WD}$	Number of tanks	$\varnothing$
[m <sup>3</sup> /d]		[m <sup>3</sup> ]	[m]	[m]	[m]	[m]		[m]
0,60	4	4,1	2,1	1,0	1,0	1,40	1	2,00
0,90	6	5,5	2,8	1,4	1,4	1,20	1	2,50
1,20	8	6,5	3,3	1,6	1,6	1,40	1	2,50
1,50	10	7,4	3,8	1,8	1,8	1,60	1	2,50
1,80	12	9,2	4,7	2,3	2,3	2,00	1	2,50
2,10	14	11,5	5,9	2,8	2,8	1,20	2	2,50
2,40	16	12,5	6,4	3,1	3,1	1,30	2	2,50
2,70	18	13,5	6,9	3,3	3,3	1,40	2	2,50
3,00	20	14,4	7,4	3,5	3,5	1,50	2	2,50

Standard equipment design for round tanks. Rectangular tank desing possible on request!

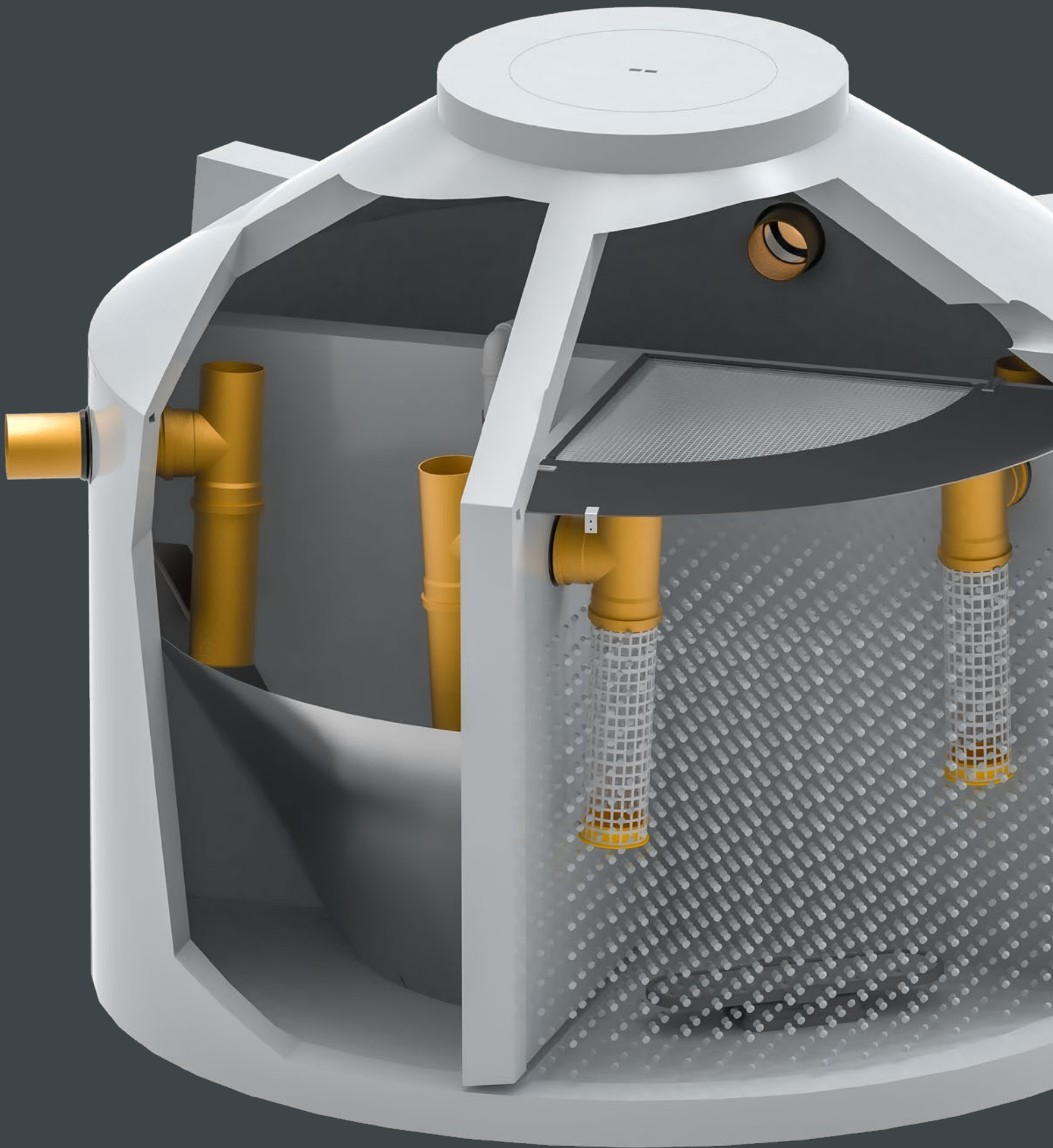
# MBBR

Sewage treatment plants  
Moving bed bioreactor  
3K-FLOW

**Safe**, organic,  
technology-free.

- \_ Technology-free tank equipment
- \_ Reliable cleaning performance
- \_ Safe underload capability
- \_ Low energy requirement





### Advantages at a glance

- Easy to install system
- Wear-free tank installations
- Absolute ageing resistance to domestic waste water
- Modular system design
- Underload capable nterlastfähig



Carrier material

Control K-Pilot 18.3 with wall console

Reactor cover

Alternatively interchangeable with a partition wall extension

Excess sludge lifter

Plate diffuser

Art.-No.	3K-FLOW	PE	Control	*Compressor	*Number of diffusers	Price
				[l/min]		[€]
700701	3K-FLOW	4	K-Pilot 18.3	80	1 / Plate	2.398,50
700702		6	K-Pilot 18.3	80	1 / Plate	2.460,00
700703		8	K-Pilot 18.3	120	1 / Plate	2.757,50
700704		10	K-Pilot 18.3	120	1 / Plate	2.870,00
700705		12	K-Pilot 18.3	150	1 / Plate	3.362,00
700706		14	K-Pilot 18.3	150	1 / Plate	3.480,00
700707		16	K-Pilot 18.3	150	2 / Plate	4.049,00
700708		18	K-Pilot 18.3	200	2 / Plate	4.243,50
700709		20	K-Pilot 18.3	200	2 / Plate	4.412,50

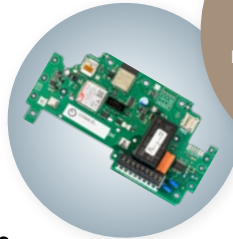
Standard equipment design for round tanks. For designing the reactor accordingly, please tell us the construction design with your order!  
Even rectangular tank desing possible!

All article variants include: lifting unit, control unit, compressor, plate diffuser, carrier material, reactor cover, overflow barriers, baffle, installation material and fabric hose

\* Standard

### Steuerung K-Pilot 18.3

- Compact design thanks to integrated rotary valve with step motor
- Modern control system for reliable operation
- Graphic display
- Safe and easy handling
- Connection of an additional clear water pump or buffer pump
- Excess sludge can be set as air-lift or pump
- Additional air-lift can be controlled



**IoT**  
optionally with module for remote monitoring via WLAN or GSM



Control K-Pilot 18.3 with wall console

### Wastewater treatment specifications according to PE:

PE	Q <sub>D</sub> [m³/d]	V <sub>tot</sub> [m³]	V <sub>PT</sub> [m³]	V <sub>R</sub> [m³]	V <sub>Sed</sub> [m³]
4	0,60	4,00	2,00	1,00	1,00
6	0,90	5,00	2,50	1,25	1,25
8	1,20	6,00	3,00	1,50	1,50
10	1,50	7,20	3,60	1,80	1,80
12	1,80	8,40	4,20	2,10	2,10
14	2,10	9,80	4,90	2,45	2,45
16	2,40	11,20	5,60	2,80	2,80
18	2,70	12,60	6,30	3,15	3,15
20	3,00	14,00	7,00	3,50	3,50
22	3,30	15,40	7,70	3,85	3,85
24	3,60	16,80	8,40	4,20	4,20
26	3,90	18,20	9,10	4,55	4,55
28	4,20	19,60	9,80	4,90	4,90
30	4,50	21,00	10,50	5,25	5,25
32	4,80	22,40	11,20	5,60	5,60
34	5,10	23,80	11,90	5,95	5,95
36	5,40	25,20	12,60	6,30	6,30
38	5,70	26,60	13,30	6,65	6,65
40	6,00	28,00	14,00	7,00	7,00
42	6,30	29,40	14,70	7,35	7,35
44	6,60	30,80	15,40	7,70	7,70
46	6,90	32,20	16,10	8,05	8,05
48	7,20	33,60	16,80	8,40	8,40
50	7,50	35,00	17,50	8,75	8,75

PE = Population equivalent  
 V<sub>tot</sub> = [m³] Total volume  
 V<sub>PT</sub> = [m³] Pre-treatment volume  
 V<sub>R</sub> = [m³] Reactor volume  
 V<sub>Sed</sub> = [m³] Sedimentation chamber volume



### Retrofit kits 3K-FLOW-S

3K-FLOW-S variant, can be used for up to 16 PE

The 3K-FLOW-S set-up kit comes with a D-Pilot 22.2 control incl. wall-mounted cabinet instead of the K-Pilot 18.3.

Art.-No.	PE	Price
700731	4	2.152,00 €
700732	6	2.214,00 €
700733	8	2.511,00 €
700734	10	2.624,00 €
700735	12	3.116,00 €
700736	14	3.234,00 €
700737	16	3.803,00 €

For designing the reactor accordingly, please tell us the construction design with your order!



Control D-Pilot 22.2 including wall cabinet

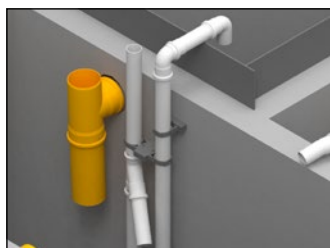
Compressor replacement	Surcharge
AP-80 to AP-120	182,50 €
AP-80 to LP-150	554,50 €
AP-80 to LP-200	675,50 €
AP-120 to LP-150	372,00 €
AP-120 to LP-200	493,00 €
LP-150 to LP-200	121,00 €



Optional: Wall cabinet 6N (W x H x D: 530 x 580 x 250 mm)  
Art.-No. 102354 (without compressor + control)  
Wall cabinet can be used for up to 20 PE



Optional: Street cabinet 6.1T  
(W x H x D: 400 x 1275 x 320 mm)  
Art.-No. 102603  
(without compressor + control)  
Street cabinet can be used for up to 20 PE



Feeding air-lift  
Art.-No. 700720

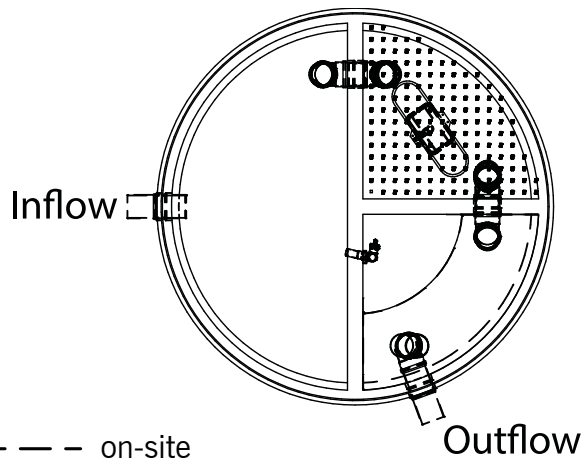
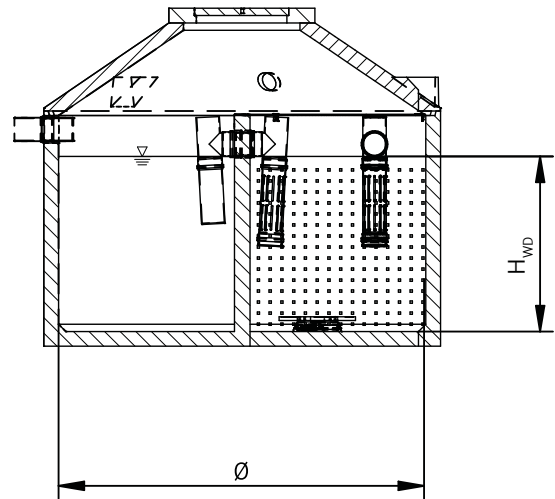
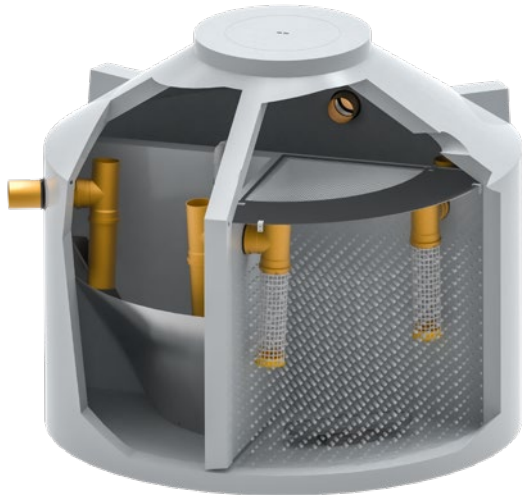
Use of feeding air-lift in the pre-treatment to implement a buffer volume for high inflow peaks. Control unit K-Pilot 18.3 needed!



Excess sludge pump, model 1  
Art.-No. 121137

Art.-No.	Artikelbezeichnung	Note	Price
101555	Additional plate diffuser, ready for connection to 16 mm air hose		149,50 €
102451	Buffer / feeding pump model 1 with 10 metre cable	1	582,00 €
121137	Excess sludge pump model 1 with 10 metre cable	1	537,00 €
700720	Additional air-lift for 3K-FLOW with buffer operation in the main flow	2	145,50 €
700740	PAKT partition wall bracket for 3K-PLUS (for concrete)		193,00 €
700741	PAKT partition wall bracket for 3K-PLUS (for plastic)		193,00 €
102609	Partition wall extension for 3K-FLOW reactor	3	172,00 €

<sup>1</sup> Other cable lengths on request | <sup>2</sup> When using the air-lift, the use of a partition wall extension instead of the reactor cover is recommended | <sup>3</sup> Replacement in the set-up kit at no extra charge



Round tanks

$Q_d$	PE	$V_{tot}$	$V_{PT}$	$V_R$	$V_{Sed}$	$H_{WD}$	Number of tanks	$\varnothing$
[m <sup>3</sup> /d]		[m <sup>3</sup> ]	[m]	[m]	[m]	[m]		[m]
0,60	4	4,1	2,1	1,0	1,0	1,40	1	2,00
0,90	6	5,5	2,8	1,4	1,4	1,20	1	2,50
1,20	8	6,5	3,3	1,6	1,6	1,40	1	2,50
1,50	10	7,4	3,8	1,8	1,8	1,60	1	2,50
1,80	12	9,2	4,7	2,3	2,3	2,00	1	2,50
2,10	14	11,5	5,9	2,8	2,8	1,20	2	2,50
2,40	16	11,5	5,9	2,8	2,8	1,20	2	2,50
2,70	18	13,5	6,9	3,3	3,3	1,40	2	2,50
3,00	20	14,4	7,4	3,5	3,5	1,50	2	2,50

Standard equipment design for round tanks. Rectangular tank desing possible on request!

# H-/P-/C-/CL- module

Waste water treatment  
using additional modules.

**Effective**, safe,  
retrofittable.

- \_ Additional cleaning stage
- \_ Can be retrofitted into existing systems
- \_ Demand-orientated scaling
- \_ High operational reliability



**H-module** – UV disinfection as an additional cleaning stage

- In stainless steel housing
- High operational reliability
- Low maintenance
- Ideal maintenance due to installation in street cabinet
- Retrofittable for sewage treatment plants already in operation



Hygienisation  
also available as  
**CL-MODULE**



*H-module for AQUATO® PUMP  
Control unit not included*

*H-module for AQUATO® KOM / KOM-PAKT (clear water pump required)  
Compressor and control unit not included.*

Art.-No.	Article description	Suitable up to PE	Price
121038	H-module AQUATO® KOM / STABI-KOM, for use without street cabinet	16	2.406,50 €
121209	H-module AQUATO® KOM / STABI-KOM, for use without street cabinet	50	5.194,50 €
121017	H-module AQUATO® KOM / STABI-KOM, installed in street cabinet	16	3.352,00 €
121025	H-module AQUATO® KOM / STABI-KOM, installed in street cabinet	20	6.140,00 €
121034	H-module AQUATO® KOM / STABI-KOM, installed in street cabinet	50	6.803,00 €
121018	H-module AQUATO® PUMP, installed in street cabinet	16	3.156,00 €
121019	H-module AQUATO® PUMP, installed in street cabinet	50	6.140,00 €
121020	Replacement UV tube for Aquada 2	16	261,50 €
121021	Replacement quartz glass tube 25 x 1.3 x 560 mm, Aquada 2	—	85,00 €
121039	Replacement UV tube for Aquada 7	50	248,00 €
121040	Replacement quartz glass tube 25 x 1.3 x 910 mm, Aquada 7	—	116,00 €

Larger UV lamps on request



**P-module** – Phosphate precipitation as an additional purification stage

**C-module** – External carbon source for underload operation

**CL-module** – Chlorine disinfection as downstream hygienisation

- Sturdy plastic storage tank
- Low-maintenance dosing pump
- High operational reliability
- Easy to refill
- Easy to install thanks to chain mounting (up to 8 PE)
- Can be retrofitted for sewage treatment plants already in operation



*Dosing module, double-walled for free-standing installation 200 litres*



*Dosing module integrated in the tank 10 litres*

Art.-No.	Article description	as P-module suitable up to PE	as C / CL module suitable up to PE	Price
121012	Dosing module integrated in the tank, 10 litres for AQUATO® KOM / STABI-KOM	4	Project-related design	1.951,50 €
121015	Dosing module integrated in the tank, 20 litres for AQUATO® KOM / STABI-KOM	8		2.135,00 €
121013	Dosing module integrated in the tank, 10 litres for AQUATO® PUMP	4		1.951,50 €
121014	Dosing module integrated in the tank, 20 litres for AQUATO® PUMP	8		2.135,00 €
121108	Dosing module free installation, 60 litres	24		2.373,00 €
112120	Dosing module free installation, 100 litres	Project-related design		2.717,50 €
121109	Dosing module free installation, 200 litres			3.179,50 €

# ORKA

Sustainable solutions for large  
wastewater quantities.

**Scalable**, proven,  
long lasting.

- \_ Project-related planning
- \_ Proven wastewater treatment processes
- \_ Intuitive control technology
- \_ Reliable operation and low maintenance



## Larger wastewater volume?

A sustainable solution requires a consistent analysis of requirements, competent planning and reliable technology. Regardless of whether it is a new build or the expansion of an existing wastewater treatment plant. Our goal is to provide a reliable wastewater treatment plant as a cost-effective and coherent concept with all our 'know how' for your requirements.

The selection and use of high-quality components plays just as important a role in the success of our ORKA solutions as the simple installation of the components on site. Our AQUATO® ORKA is already being used in housing estates, campsites, leisure centres, hotels and restaurants and other commercially used areas.

In the following we present a selection of realised projects.

### ORKA-S SSB® 20 m<sup>3</sup>/d - 120 PE

- New construction of a sewage treatment plant for an office block building
- Biological treatment according to the SSB® principle with fully plant aeration
- Further effluent treatment with chlorination, filtration and storage for irrigation purposes

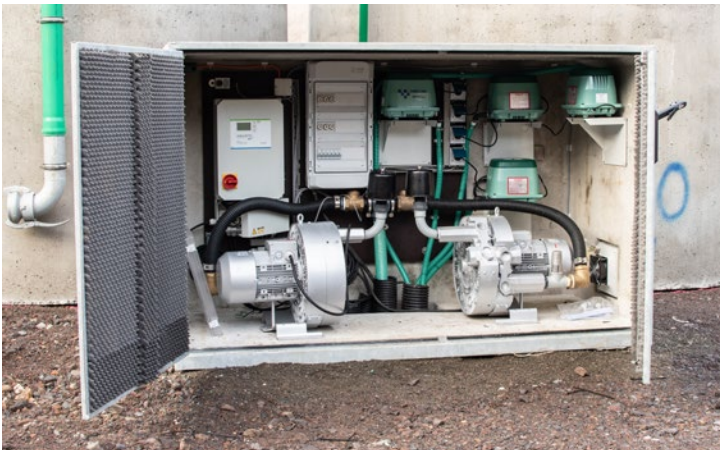
We will be happy to provide you with a  
**CUSTOMISED OFFER**





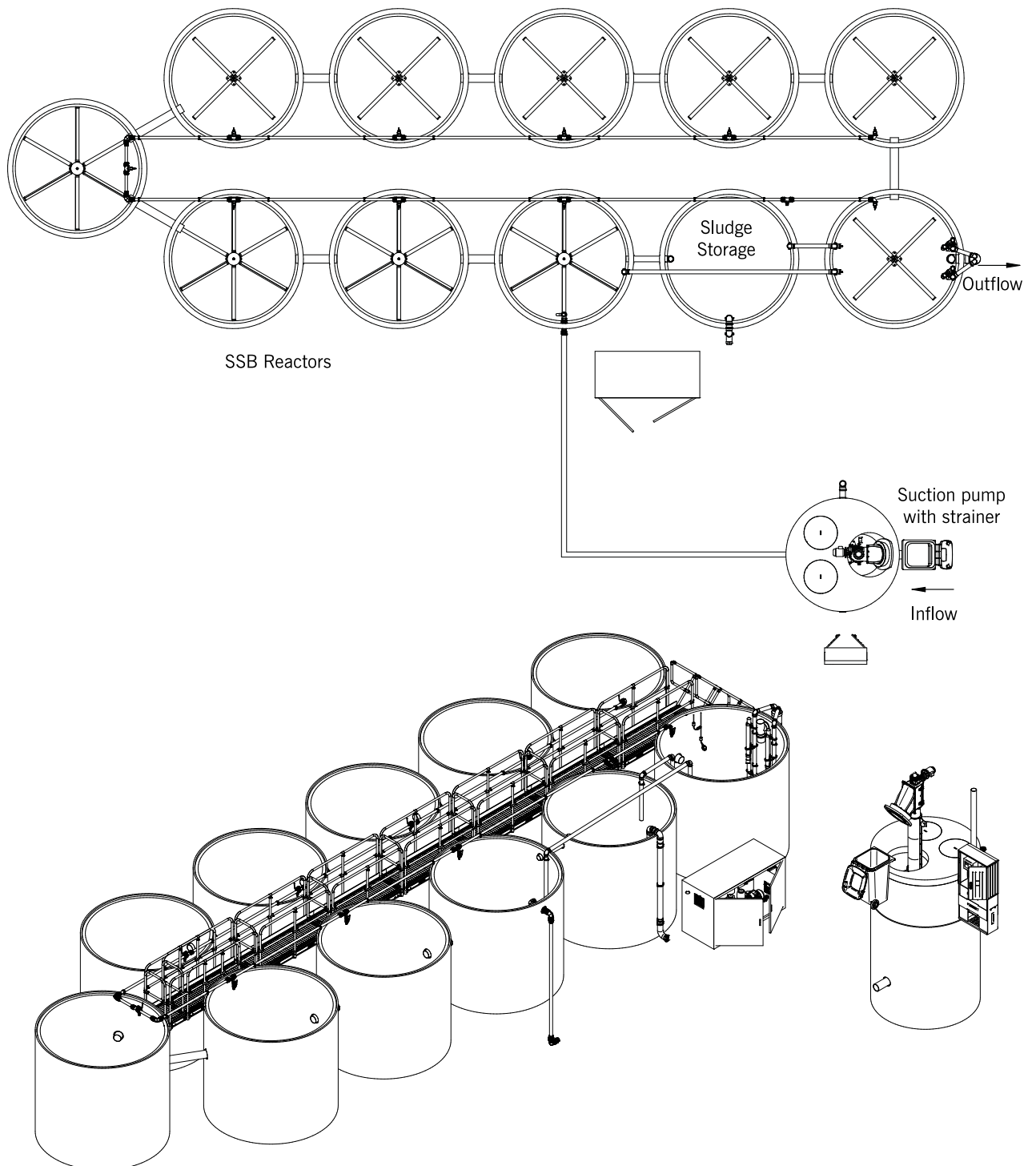
**DISCOVER  
NOW!**

Brochure  
ORKA SSB®



**Prefabricated plant ORKA SSB® 250 PE**

- New construction of a prefabricated plant for the emergency situation in the Ahr valley after the flood disaster in 2021. This serves as a replacement sewage treatment plant for the destroyed wastewater infrastructure in the Ahr valley
- Above-ground installation of the sewage treatment plant and feeding via upstream pumping station
- Mechanical pre-treatment by means of a vertical screw screen in the pump shaft
- Soundproofed installation of the aeration technology in the external stone cabinet



# Street cabinets Wall cabinets

**Protective**, compact,  
customised.

- \_ Impact-, corrosion- and heat-resistant
- \_ Weatherproof housing for electronics
- \_ Made of PE or GRP
- \_ Versatile in use





**Advantages at a glance**

- Lightweight
- Easy and quick to work with
- Extremely impact-resistant
- Heat-resistant
- Corrosion-resistant
- Weatherproof
- Lockable

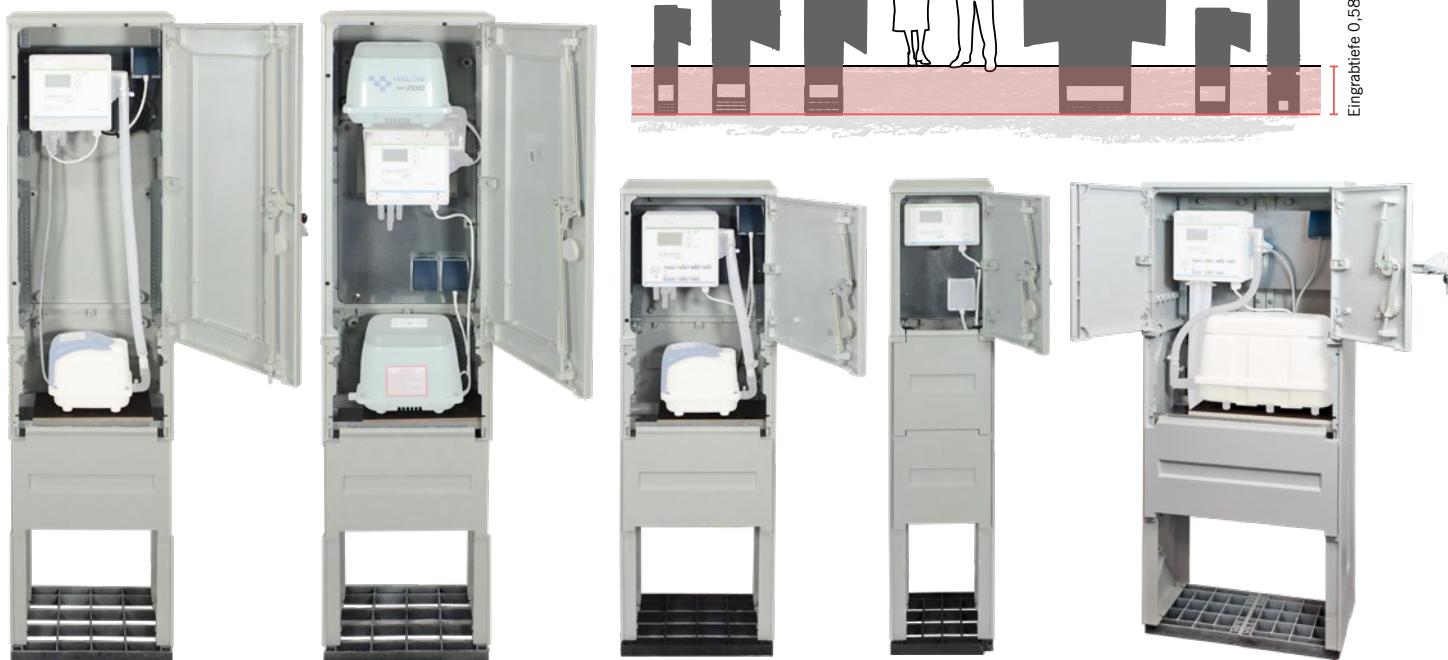
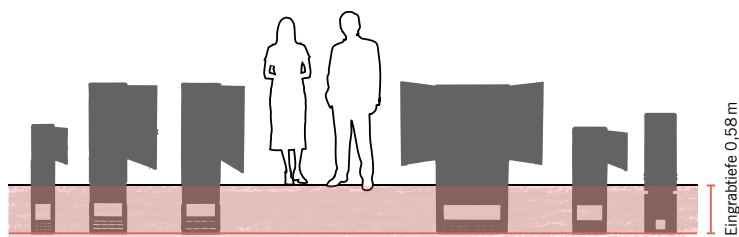
Outdoor enclosure solutions for housing control units and compressors. They provide cost-effective and reliable protection for the components and are therefore used in many areas of application.



**Plinth for wall cabinets**

- Optional, for the installation of wall cabinets
- Available in different versions

Art.-No.	Suitable for	Price
102636	Wall cabinet 6N	137,00 €
102627	Wall cabinet 9N	151,00 €
102638	Wall cabinet S (STABI-S, 3K-FLOW/PLUS-S)	121,00 €



Model 2.1T  
Art.-No. 102608

Model 3.1T  
Art.-No. 102605

Model 6.1T  
Art.-No. 102604

Model 1  
Art.-No. 100550T<sup>2</sup>

Model 9N.1  
Art.-No. 102320

Art.-No.	Article description	Capacity for	Dimensions W x H x D	Price
102608	Street cabinet model 2.1T	01–20 PE	400 mm x 1695 mm x 320 mm	397,50 €
102605	Street cabinet model 3.1T <sup>1</sup>	21–40 PE	400 mm x 1695 mm x 320 mm	524,00 €
102604	Street cabinet model 6.1T	01–20 PE	400 mm x 1275 mm x 320 mm	332,00 €
100550T <sup>2</sup>	Street cabinet model 1	01–50 PE	265 mm x 1275 mm x 250 mm	218,50 €
102203	Street cabinet model 6N.1	01–20 PE	530 mm x 1275 mm x 250 mm	346,50 €
102320	Street cabinet model 9N.1	01–20 PE	530 mm x 1275 mm x 320 mm	384,50 €

All article variants include: control mounting, compressor stand, lock and 2 keys

<sup>1</sup> Recommendation! Version with axial fan incl. filter and thermostat (Art.-No. 121192) 224,50 €

<sup>2</sup> Prepared for AQUATO PUMP control unit

Version with flashing light, red (Art.-No. 140002) 149,50 € | Not suitable for model X7!

## Wall cabinets

- For accommodating the control unit and compressor
- Various configurations possible

Art-No.	Article description	Dimensions W x H x D	Price
102354	Wall cabinet model 6N	530 mm x 580 mm x 250 mm	277,00 €
102355	Wall cabinet model 9N	530 mm x 580 mm x 320 mm	307,50 €

All article variants include: control mounting, compressor stand, lock and 2 keys



Wall cabinet 6N / 9N



Model 4.2V  
Art.-No. 102622



Model 4.3V  
Art.-No. 102648



Axial fan incl. filter and thermostat  
(Art.-No. 121192)



Model X7  
Art.-No. 101932 | Grey  
Art.-No. 101960 | Olive

Art-No.	Article description	Capacity for	Dimensions W x H x D	Price
102622	Street cabinet model 4.2V <sup>1</sup>	01–40 PE	530 mm x 1695 mm x 320 mm	799,50 €
102648	Street cabinet model 4.3V <sup>2</sup>	01–50 PE	530 mm x 1695 mm x 320 mm	866,00 €
101932	Street cabinet model X7, Grey	01–20 PE	422 mm x 1510 mm x 316 mm	308,50 €
101960	Street cabinet model X7, Olive	01–20 PE	422 mm x 1510 mm x 316 mm	346,50 €

All article variants include: control mounting, compressor stand, lock and 2 keys

<sup>1</sup> Recommendation! Version with axial fan incl. filter and thermostat (Art.-No. 121192) 224,50 €

<sup>2</sup> Prepared with axial fan incl. filter and thermostat

Version with flashing light, red (Art.-No. 140002) 149,50 € | Not suitable for model X7!

# Pumping stations

**Flexible**, licensed,  
needs-oriented.

- \_ Proven branded pumping stations
- \_ Customised dimensioning
- \_ Versatile configuration options
- \_ Pre-assembled at the factory



## Pumping stations and accessories

We stock a comprehensive range of pumping stations as well as spare parts and accessories.

We will be happy to advise you on choosing the right solution for you, and we also offer a selection of pre-assembled single and double pumping stations.



### PS-03 Pentair/Jung

- Approval Z-42.1-431
- Polyethylene shaft
- Diameter 80 cm, base 97.5 cm
- Overall height from 160 cm
- Weight empty approx. 81 kg
- Walkable cover\*
- Cutting wheel pump (18 m<sup>3</sup>/h at 6 m)
- Control unit for 400 V



Single pumping station Jung  
Art.Nr. 10100001

Art.-No.	Article description	Price
10100001	Pressurized drainage PE single pumping station Jung	4.305,00 €
10100004	Pressurized drainage PE double pumping station Jung	7.925,00 €

\* Class B covers, on request  
Spare parts and shaft extensions on request

### PS-02 KSB

- LGA – TÜV Rheinland: BB4S 69603506
- Polyethylene shaft
- Diameter 80 cm, base 107 cm
- Overall height from 172 cm
- Weight empty approx. 70 kg
- Walkable cover\*
- Cutting wheel pump (15 m<sup>3</sup>/h at 5 m)
- Control unit for 400 V



Single pumping station KSB  
Art.Nr. 10100012

Art.-No.	Article description	Price
10100012	Pressurized drainage PE single pumping station KSB	5.160,00 €
10100003	Pressurized drainage PE double pumping station KSB	8.600,00 €

\* Class B covers, on request  
Spare parts and shaft extensions on request



Errors, price changes, model, colour and dimensional deviations excepted.

Our General Terms and Conditions apply, the current version of which can be viewed at [www.aquato.de](http://www.aquato.de)

Presented by:



**AQUATO® Umwelttechnologien GmbH**

Ernstmeierstr. 24 fon +49 5221 10219-0 info@aquato.de  
32052 Herford fax +49 5221 10219-20 www.aquato.de